

Wilderness Navigation GPS Activity #2 Setup Guide

Student Version - The Mountaineers

Summary: In preparation for Activity #2 (In-Person Workshop + Field Trip), you need to load the student GPX file (FT4.03_DP_GPX_STDT) onto your smartphone, and complete the checklist below. Instructors will verify that you have done this correctly during Activity #2.

Maps: You do not need to print any hardcopy maps. Hardcopy Caltopo maps will be issued to you at Activity #2. Please return them when you arrive back at the parking area.

Note: The attached screen captures are from an iPhone, there may be variance on an Android device.

Checklist for Activity #2:

- Free Gaia account created + sign-in confirmed, GaiaGPS is loaded on your smartphone.
- Free Caltopo account created + sign-in confirmed.
- Student GPX file has been imported to GaiaGPS on smartphone.
- Device is fully charged, + spare power source.
- Device is weatherproofed. Expect rainy weather

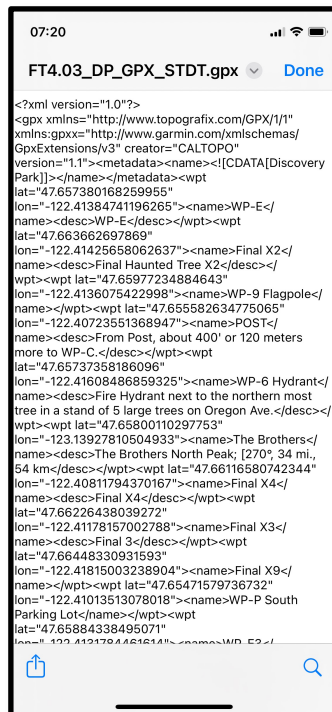
Setup

Download the FT4.03_DP_GPX_STDT file from the **Course Materials Page**. Example: After downloading the file to your desktop computer, **Email** the file to yourself, download to your phone and tap the “share” icon, direct the share to the Gaia app. You should automatically see the “All Imports Complete” confirmation.

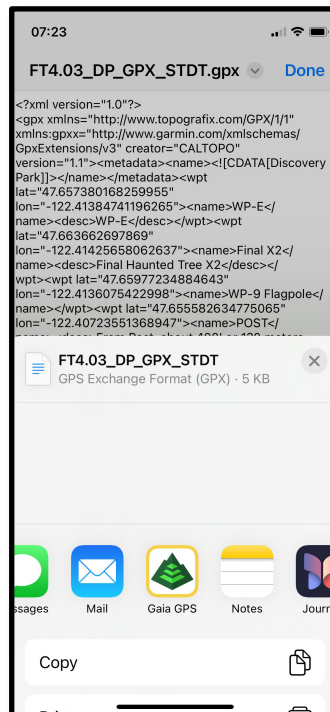
Tap Download



Tap Share



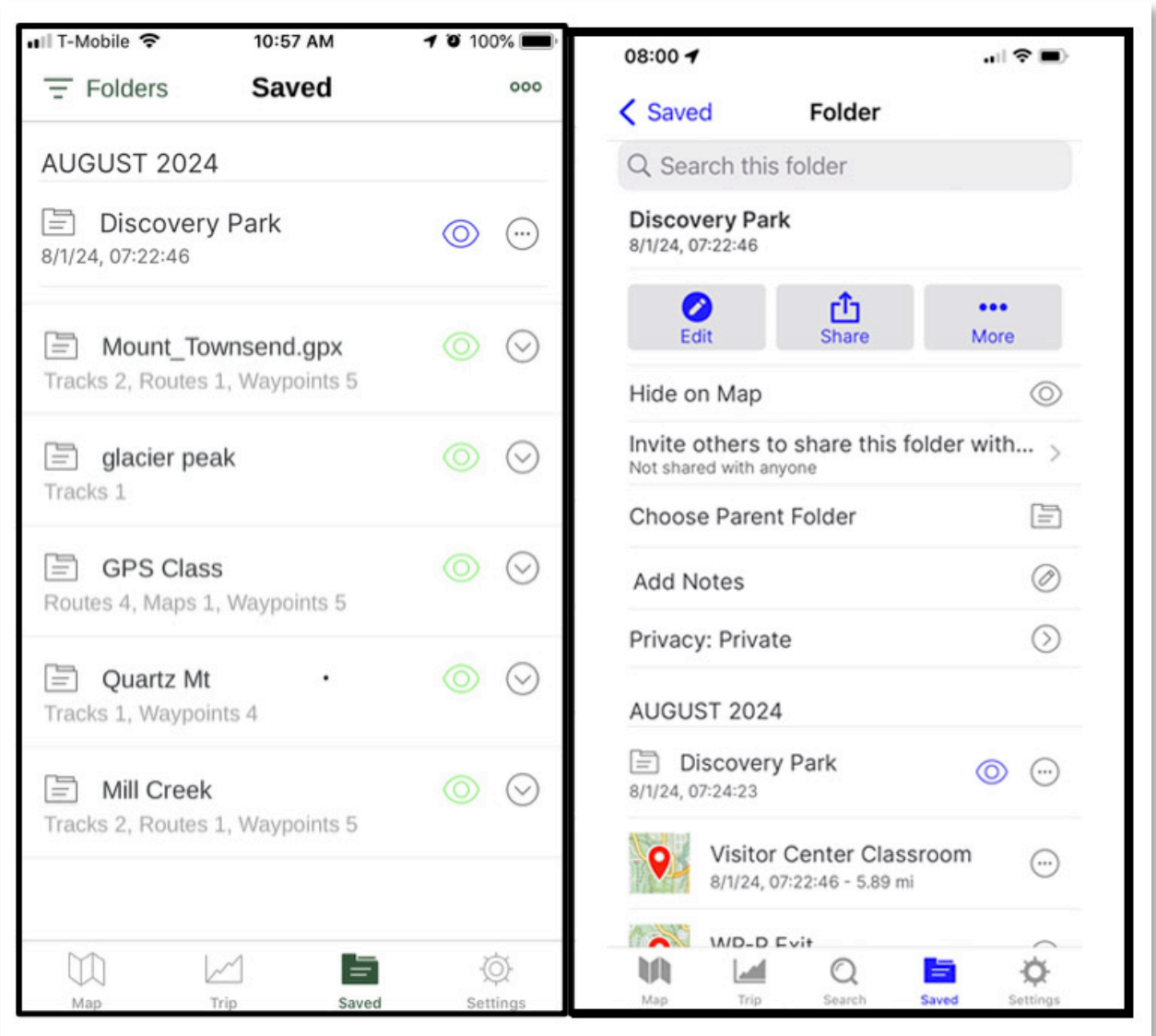
Tap Gaia



Confirm

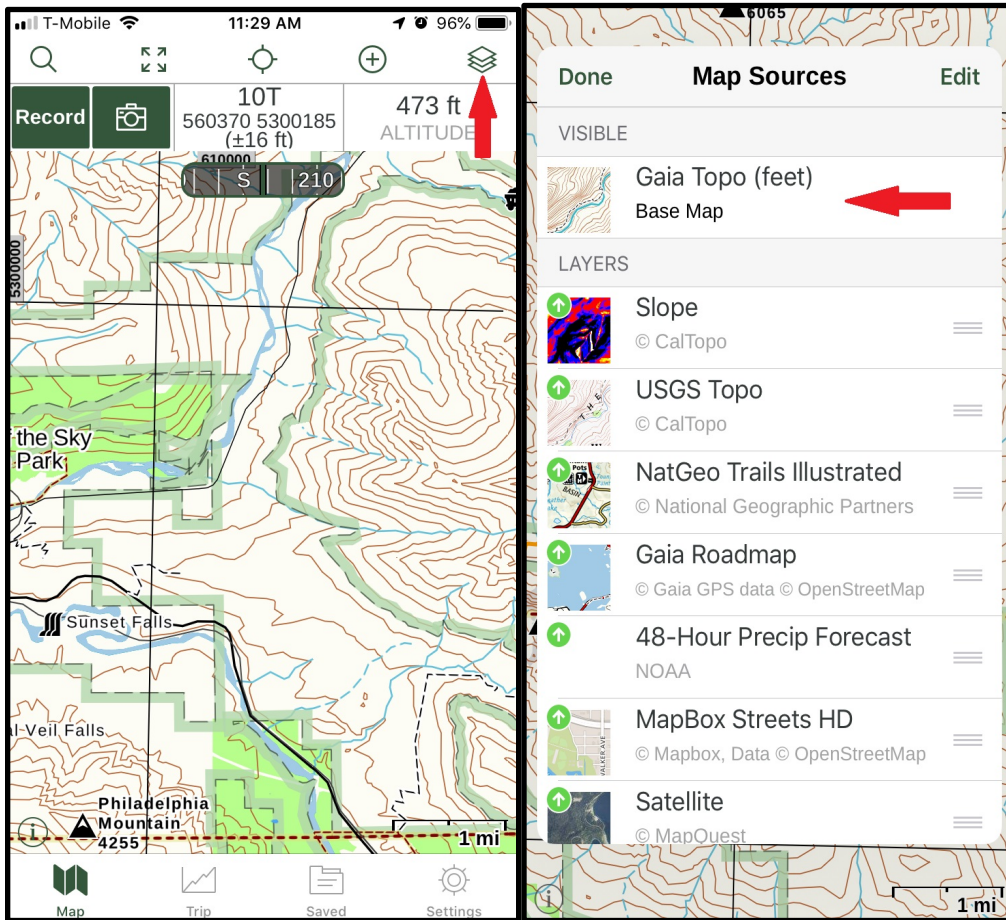


NOTE: The method for downloading GPX files in your web browser can vary based on the type and version of the browser you are using. Once the GPX file has been imported to GaiaGPS, verify that a folder has been created in GaiaGPS with the following name: Discovery Park.

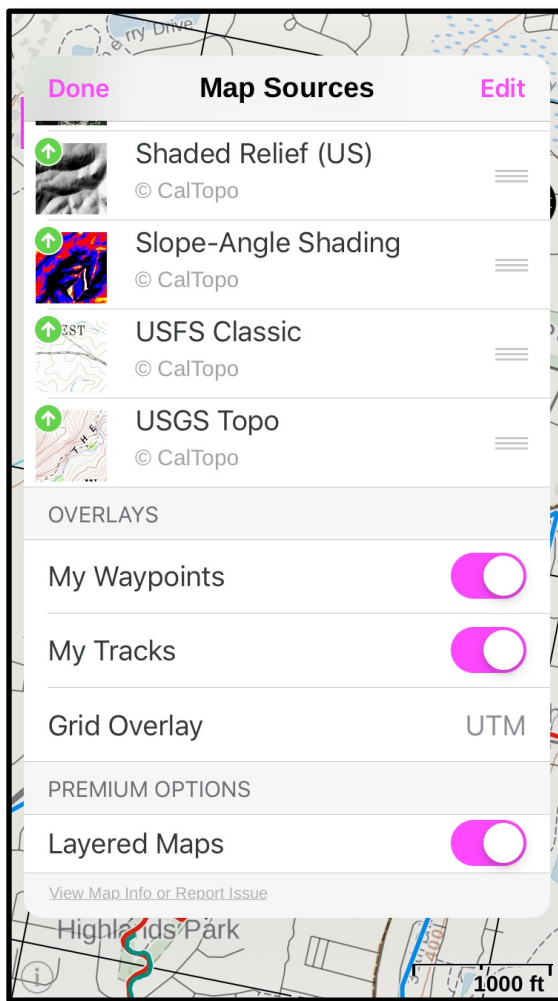


Configure Layers

Select the “**layers**” button. Configure the primary viewable map to be: **Gaia Topo**. This should appear first in the order of viewable maps.



Set your tracks and waypoints to display. On the “*map sources*” page, scroll down to see the “*overlays*”. Enable “*My Waypoints*”, “*My Tracks*” to display on your map.



If you have any questions regarding this, please talk to a friendly online help team member or an instructor at Activity #2.