

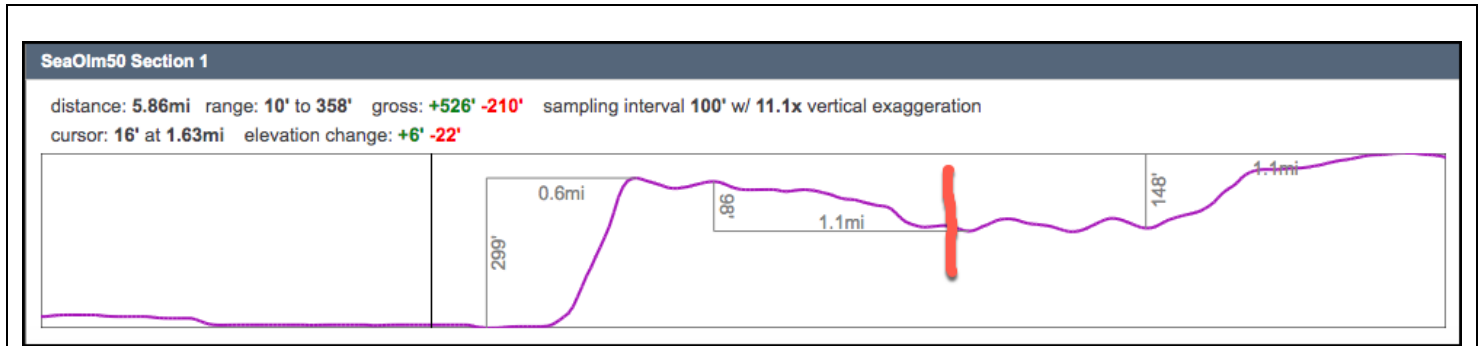
## Seattle Olmsted 50 Trail – Section 1

<b>S1 9.4km, 159m</b>	<b>S2</b> 10.3-km,110m	<b>S3</b> 10.7km, 197m	<b>S4</b> 9.7km, 178m	<b>S5</b> 10.8km,139m
-----------------------	------------------------	------------------------	-----------------------	-----------------------

### Ballard Locks to Woodland Park Zoo

Walking distance: 9.4 km (5.9 mi)

Elevation gain: 159m (526ft)



**Section 1** of the Seattle Olmsted 50 trail begins at the Ballard (Hiram M Chittenden) Locks served by several Metro Bus routes.

You can split Section 1 into two shorter walks. Section 1 West runs from the Locks to Loyal Heights Playfield 6.1 km, 3.8 mi and Section 1 East finishes at the Woodland Park Zoo west entrance 3.3 km, 2 mi. A Loop Option, Locks to Golden Gardens and return, is also available 8.7km (5.4 mi).

For public transit options, public bathrooms and treats see the last page.

### Section 1 West

Walking distance: 6.1 km (3.8 miles)

Elevation gain: 99 m (326 ft)

**Walkers are responsible for their own safety on Seattle Olmsted routes.**

**Note:** Stroller friendly options for the standard route are offered along the way.

- From the entrance to the Ballard Locks, walk west along NW 54<sup>th</sup> Street. You're
- You soon encounter a vest pocket park, **A Salish Welcome**, with platform views to saltwater entrance to the 8-mile Lake Washington Ship Canal, opened July 25, 1916. You're now seamlessly walking along Seaview Ave NW.

- Continue through the Burlington Northern underpass where the Salmon Bay single-leaf bascule railway bridge connects Magnolia / Interbay to Ballard. Water may be available at a public fountain. Now walking along the Burke Gilman Trail, a classic rails to trails conversion. Walkers stay right.

*We are on the traditional land of the **Coast Salish** peoples who live here and steward these lands and waters as they have for time immemorial.*

- **Seaview Picnic Park** offers more canal views with boats queuing to enter the Locks. Wider vistas await at NW 60<sup>th</sup> Street Viewpoint – several benches.

**Loop Option:** Stroller rollers and Loopers after NW 60<sup>th</sup> Viewpoint, cross tracks to turn north on NW 61<sup>st</sup> Street and walk through the spectacular **Sunset Hill Park**<sup>2</sup>. Full directions after Section 1 East.

- **Ray's Boathouse** is a longtime Seattle favorite for shore side, fine dining, and a well-concealed public beach.
- The Seaview Boatyard West signals the start of the massive Port of Seattle **Shilshole Bay Marina**. Turn left (west) into marina parking to admire the over 1,400 monthly and live aboard craft, one

of the largest boating communities on the West Coast

(<https://www.portseattle.org/maritime/shilshole-bay-marina>).

- Say, "Hallo" to **Leif Erickson** (statue) who never sailed west to Seattle but is an icon to the many Norsk immigrants who fished and fish these waters. The **National Norsk Museum** is only a half mile east of the Locks.



**Leif Erickson** – Photo P Hendrickson

- Ignore the many toilet, laundry and mail service buildings – they're card entry only for marina residents. Find public toilets at commercial center and the north end behind locals' favorite, **Little Coney** (soft serve, fries, fish...).
- Turn left again to continue on the paved shore path. The Burke Gilman Trail terminates nearby on the other side of Seaview Ave NW.
- A Golden Gardens sandy swimmers' beach lays ahead, a favorite with kids who love to dam the tiny creek while parents sit on shaded park benches.
- Continue on the paved path to the historic **Golden Gardens<sup>4</sup> Bathhouse** where you'll find public bathrooms, a snack bar and wedding venue.
- While not on the SeaOlm50 route, many may wander north up the beach and find the beaver pond near the end of the park.

Circle back south on Golden Gardens Park Road along the play area.

- The main route continues east through a pedestrian tunnel beneath the tracks. Bear right up on the paving stones to the hairpin turn of Golden Gardens Drive NW.
- Follow the sidewalk up the hill passing a small retention basin, one of the many Works Progress Administration 1930's remnants of trail construction on the steep hill. Caution as the hillside weeps year-round leaving a frozen path winter days.
- A well maintained set of stairs appears on your left. Some 18 landings carry you up the first 135 steps. That small stream is canalized right and left of the stairway.
- Another bathroom block greets you at an upper parking and Off Leash Area. Bear left towards 18 steps leading to a protected road crossing.
- Deep breath and tackle another 55 steps (no landings) and follow the sandy path south to a switchback.
- Continue up to find the final 82 steps leading to the 34<sup>th</sup> Avenue NW (Bus #17) and NW 85<sup>th</sup> Street (Bus #45) junction.
- **Cafe Fiore** (elevation 92m/305ft) across the street survived arson and remains a North Seattle favorite (organic coffee, wraps, pastries, kids' play corner) with indoor and street-side seating.
- Stroller friendly Loyal Way NW heads SE on the south side to intercept NW 80<sup>th</sup> Street in about 7 blocks.
- Cross with care this five-way intersection to head east on NW 80<sup>th</sup> Street to 25<sup>th</sup> Avenue NW where you again cross with caution -- use the flags.
- **Larsen's (Danish) Bakery** anchors the corner with all manner of Scandinavian and other goods.
- Continue east down NW 80<sup>th</sup> Street six blocks to 22<sup>nd</sup> Avenue NW.
- Turn right to walk on to NW 77<sup>th</sup> Street.
- Cross into the **Loyal Heights Playground** where you'll find public bathrooms in the Loyal Heights Community Center (M, W, F 9 to 9 and Tu, Th 9 to 7:30) and outside facing the Loyal Heights Playfield. Bus #18, #40 at nearby 24<sup>th</sup> Avenue NW and NW 77<sup>th</sup> Street.

You have completed Section 1 West. To return to Ballard Locks Bus #40 to Market St and #44 to Locks.

## Section 1 East

*Walking distance: 3.3 km (2.0 miles)  
Elevation gain: 61 m (200 ft)*

**Note:** While there is more elevation gain in Section 1 East, the grade is gentler. No multiple flights of stairs to ascend!

- Exit Loyal Heights Playfield to the east to 20<sup>th</sup> Avenue NW.
- Turn south (right) on 20<sup>th</sup> Avenue NW and walk two blocks to enter the Olmsted 2.8-acre **Salmon Bay Park<sup>1</sup>**, 2001 NW Canoe Pl. Donated to the city of Ballard in 1890, with annexation it became a Seattle City park and was called out by the Olmsted Brothers in the 1908 city map. Toilets, Zip line!, playground, picnic tables.
- Exit Salmon Bay Park to the east onto NW 70<sup>th</sup> Street.
- Cross the busy 15<sup>th</sup> Avenue NW (traffic light) passing Koo Hoo Thai Street (left side) or **Rosellini's Bakery** (right side).
- Caution again to cross 8<sup>th</sup> Avenue NW (flags) east towards neighborhood favorite **The Barking Dog Alehouse** (craft beers, food, big screens/sports). Check out the sidewalk art along the outdoor seating.
- Flags again support crossing 3<sup>rd</sup> Ave NW as you gradually gain altitude towards Phinney Ridge.
- Turn right onto Greenwood Ave N where treats abound heading south towards prize-winning **Red Mill Burgers**. Marvel that they share picnic tables with next-door **Ridgewood Bottle & Tap** – live drafts.
- Cross Phinney Avenue North (yes, street name changed at the "S" curve) and check out the action at the **Phinney Center**, home of the well staffed Phinney Neighborhood Association – events calendar (<https://www.phinneycenter.org/>). Toilets, myriad arts plus social and business services to North Seattle.

- Continue south on Phinney Avenue N where eateries abound to **West Woodland Park<sup>1</sup> Playground** at N 59<sup>th</sup> Street.
- If not continuing to Section 2, exit the playground to the **Woodland Park Zoo** entry path (no fee) to find the public restrooms (no fee) and West Entrance into the Zoo (fee).

### Return to Ballard Locks Options

- Cross Phinney Ave North and walk west down North 55<sup>th</sup> Street (right side) to catch Bus #44 at the Market Street North stop, foot of the hill.
- As above down the hill, but continue through downtown Ballard to the Ballard Locks on Market Street North.

### Congratulations, you just completed Section 1 of the Seattle Olmsted 50!

#### Section 1 Loop Finish Option

>>Total Loop and Loop Finish Section Data<<  
*Distance: 8.7 km (5.4 miles)—7.7km (4.7 mi)  
Elevation gain: 133 m (439 ft) 133m (439 ft)*

- Note:** Loop Option is stroller friendly with gradual up and many stairs down, then flat.
- Cross tracks turning left (north) up 38<sup>th</sup> Avenue NW which passes under other tracks to NW 61<sup>st</sup> Street.
  - At 36<sup>th</sup> Avenue NW turn left (west) to NW 65<sup>th</sup> Street.



**Sunset Hill Park October 2024** – Photo P Hendrickson

- Turn right (east) to 34<sup>th</sup> Avenue NW then left (north) into **Sunset Hill Park<sup>2</sup>**, -- such a crowd at sunset looking over the water.

- At NW 77<sup>th</sup> Street turn right (east) to 32<sup>nd</sup> Avenue NW, then east (north).
- At the Café Fiore corner Loyal Way NW and NW 85<sup>th</sup> Street, pause and then turn left (west) to head down the linked stairs first of Golden Gardens Off Leash Area (with bathroom), then to Seaview Place NW
- Turn right (north) to follow the sidewalk along Golden Gardens Drive NW to the railway tunnel.
- Exit the tunnel and cross with caution Seaview Place NW onto the sandy beach (or sidewalk).

- Turn right (south) onto Seaview Avenue NW passing **Ray's Boathouse** and other eateries.
- Seaview Picnic Park provides canal overlooks before you cross the RR tracks to continue towards the Burlington Northern RR underpass with views of the massive bascule bridge.
- **A Salish Welcome**, overlook and totem pole, is the final park before arriving at the Hiram M Chittenden Locks in the next block.

### You've Finished Section 1 Loop Option

**Note:** The Friends of Seattle's Olmsted Parks map display gives five park categories. Our superscripts show: **1**)Pre-1903, **2**)1903-09, **3**)1909-13, **4**)Post 1913, and **5**)Unrealized

**Seattle Olmsted Circuit** loops 120km (75 miles) via more easterly parks and boulevards (5 Sections, October 2023) connecting with more westerly Seattle Olmsted 70 (7 Sections, June 2024). Shorter Loop Options (January 2025).

#### Contact:

Seattle Olmsted 50 lead:

Peter Hendrickson

[p.hendrickson43@gmail.com](mailto:p.hendrickson43@gmail.com)

Seattle Urban Walk Committee

The Mountaineers, Founded 1906

(Rev 24Jan2025/ph)



**Classic Seattle beach sunset.** —Photo P Hendrickson

- You could turn back to the Locks at the snack bar (bathrooms) or head to the water and walk north along the shore.
- Find a path at the picnic benches to the shallow beaver pond in the freshwater wetland.
- Turn back south across the footbridge along the broad play area, staying along the shore to **Little Coney** restaurant (bathrooms behind).
- A Leif Erickson statue lies ahead near the maritime services center for **Shilshole Bay Marina** (bathrooms 24/7). Many cruise the long list of immigrant names surrounding the statue.
- Continue alongside Marina to 3 way stop. Left (east) to Seaview Avenue NW

**Navigation Tip:** Staple, then fold sheets the long way. Easily hold them in one hand to follow the turn-by-turn. Some walkers move their thumb along the bulleted text for their current position.

## TRANSIT, TOILETS and TREATS

### King County Metro+ Transit Service Points

*Public transport is available at several locations on Section 6 but these points offer the most options.*

- **Light Rail Schedule** [Light Rail](#)
- **State Ferry Schedule** [State Ferries](#)
- **Metro Water Taxi** [Foot Ferry](#)
- **Bus Routes** [Metro Bus Routes](#)
  - Ballard Locks (32<sup>th</sup> Ave NW & NW Market St) Route #17 & (NW 54<sup>th</sup> St at Locks) #29, #44
  - Sunset Hill (32 Ave NW and NW 85<sup>th</sup> St) Routes #17, #44
  - Salmon Bay (24<sup>th</sup> Ave NW and 77<sup>th</sup> St) Routes #18, #40
  - Woodland Park Zoo (Phinney Ave North and North 59<sup>th</sup> St) Routes #5, #16

### Suggested Bathroom Stops

*Free public bathroom access is very good on Section 1 during park and business hours, among the best of all sections. Stops are listed in order of travel from Ballard Locks.*

- Ballard Locks Visitor Center and nearby businesses
- Mid & North end Shilshole Bay Marina (behind Little Coney snack bar)
- Golden Gardens Bathhouse
- Golden Gardens Off Leash Area
- Cafe Fiore near top of Golden Gate stairs (customers)
- Larsen's Bakery (customers)
- Loyal Heights Community Center and Playfield
- Salmon Bay Park
- The Barking Dog Ale House (customers)
- Phinney Center
- Woodland Park Zoo West Entrance

### Where to Buy Provisions

*Section 1 has a rich mix of residential, parks and local cafes, bakeries, ice cream parlors, and pubs. You'll find Take 5 Urban Market on 70<sup>th</sup> Street North, just before The Barking Dog*

*Ale House. There are no larger markets along this route.*

### Other Items of Interest

- **Stewards** for Section 1 are Seattle Urban Walk supporters Linda and Steve Pugmire. Veteran Volksmarch and Mountaineers hikers and urban walkers, Linda is an Urban Walk Leader.
- The **Ballard Locks** attract visitors from all over the world. Summer 2023 was a particularly good season for viewing King (Chinook) Salmon at the locks.
- **Golden Gardens** brings picnickers, volleyball players, bonfire builders, minus tide explorers, beaver naturalists, bird watchers and boaters year round.
- The **Phinney Neighborhood Association** is the preeminent arts, social services, local business supporter and activities host in North Seattle. Year round events provide a meeting place for neighbors. Perhaps you'll walk on a Farmers Market day or during an Art Walk.
- **The Woodland Park Zoo**, founded in 1899 and designed by the Olmsted Brothers, started landscape immersion exhibits in 1975 – first with gorillas. They are now an international standard for naturalistic exhibits. Zoo is 2nd after Bronx Zoo for U.S. awards received.
- **Neighborhoods near or on this route** are Ballard, Sunset Hill, Loyal Heights, Whittier Heights, Greenwood, Phinney Ridge. For more complete Olmsted Parks information, consult **Friends of Seattle's Olmsted Parks**, partners in development of this trail. Local link is [FSOP](#). The national Olmsted Network is [National](#)
- **Seattle ranks** among the top 10 park systems in the country [Top Ten](#)