



Backpacking Canada's
Tombstone Territorial Park

*Jeff Engelhardt
Ken Garrison*

Mountaineers Walking The Wild – April 2, 2025

Why go there?

- Spectacular views: park boasts 2,200 sq km of rugged peaks with vertical relief above the valley floor exceeding 4,000 ft
- Remote: just off the Dempster Highway (the only road in Canada that crosses the Arctic Circle) the backcountry campgrounds are ~150 miles from the arctic circle
- True wilderness park: no coffee shops, food services, banking, Wi-Fi, RV dump stations, telephones or cell service
- You're about to see why it's known by the traditional name Ddhäl Ch'èl Cha Nän ("Ragged Mountain Land") and is nicknamed the "Patagonia of the North" . . .
- A rare chance to explore the famous gold mining history of the Klondike Gold Rush and Dawson City.



History and Wildlife

“At least 8,000 years of human history is preserved within the park’s boundaries. This area is one of the most important cultural and hunting sites in the Traditional Territory of the Tr’ondëk Hwëch’in.”

“Caribou, moose, Dall’s sheep, grizzly and black bears, wolves, hoary marmots, pikas, shrews and voles all call Tombstone Territorial Park home.

“Birders have spotted more than 148 species of birds. Arctic tundra breeders bump up against northern boreal species.”

Bring Binoculars !

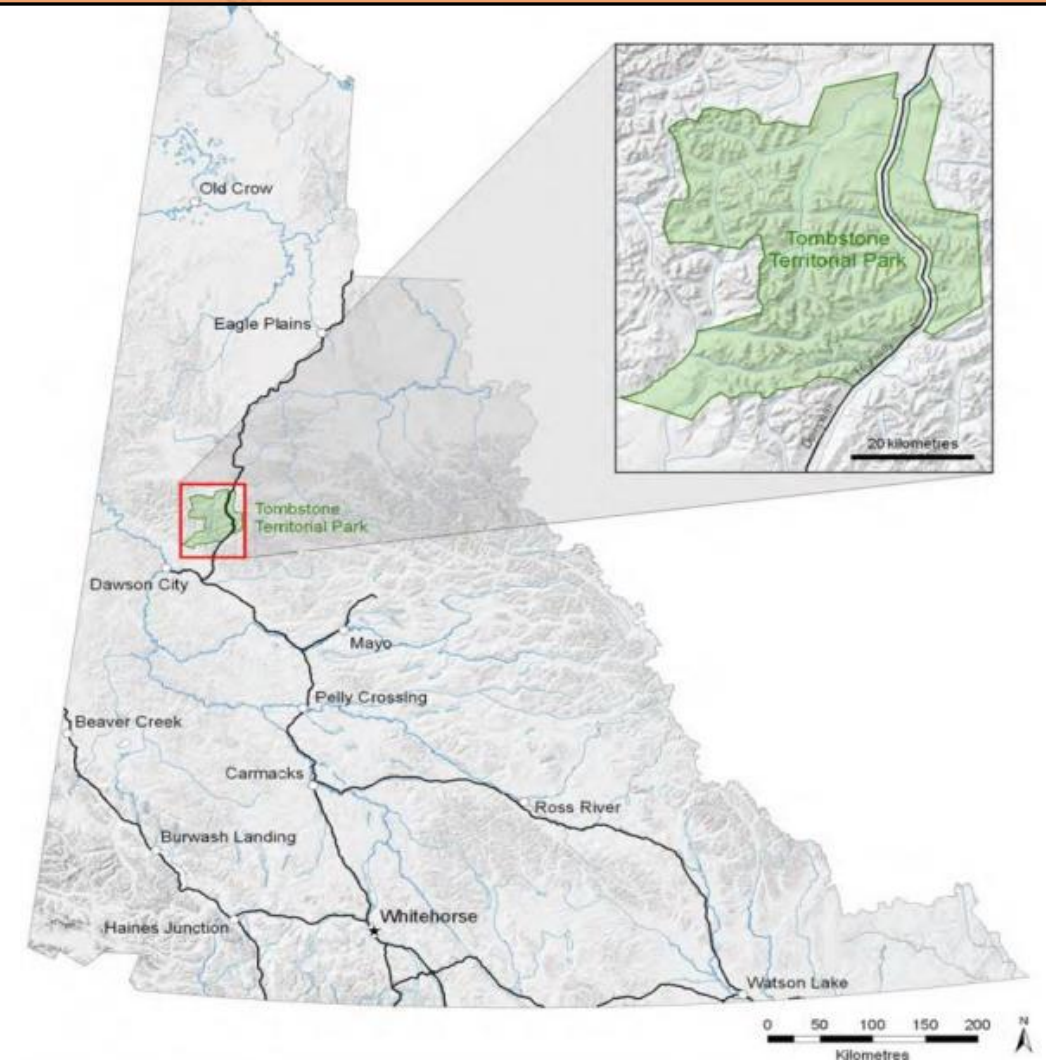


Location

Yukon Territory



Tombstone Territorial Park



High Level Travel Itinerary

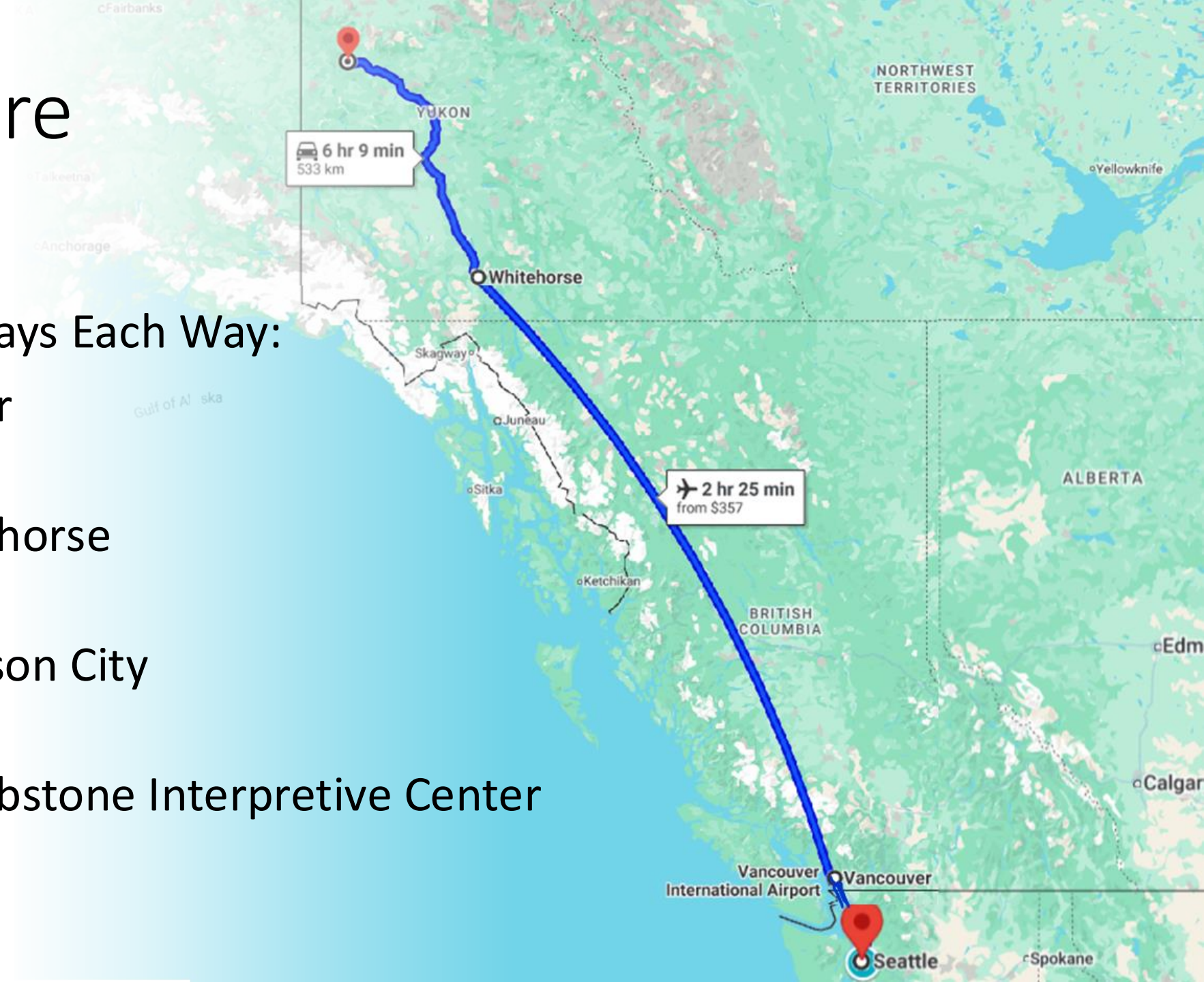
Day	Travel	Distance (mi)	Gain (ft)	Loss (ft)
1-2	Seattle - Dawson City	~1,900		
3	Dawson City - Trailhead - Grizzly Lake	65 drive / 7.0 hike	+3,000	-1,470
4	Grizzly Lake - Divide Lake	3.8	+1,700	-1,500
	Optional: Grizzly Lake - Monolith View (Round trip)	3.0	+1,710	-1,710
5	Divide Lake - Talus Lake	4.0	+620	-620
6	Talus Lake - Divide Lake	4.0	+620	-620
7	Divide Lake - Trailhead - Dawson City	10.8 hike / 65 drive	+2,970	-4,700
8-9	Dawson City - Seattle	~1,900		
Hiking Totals		32.6	+10,620	-10,620

Summary: Out and back with approx. 2 days to access and 3 days hiking in (and the same back out) but with myriad options for shortcuts, side hikes, and rest stops

Getting There

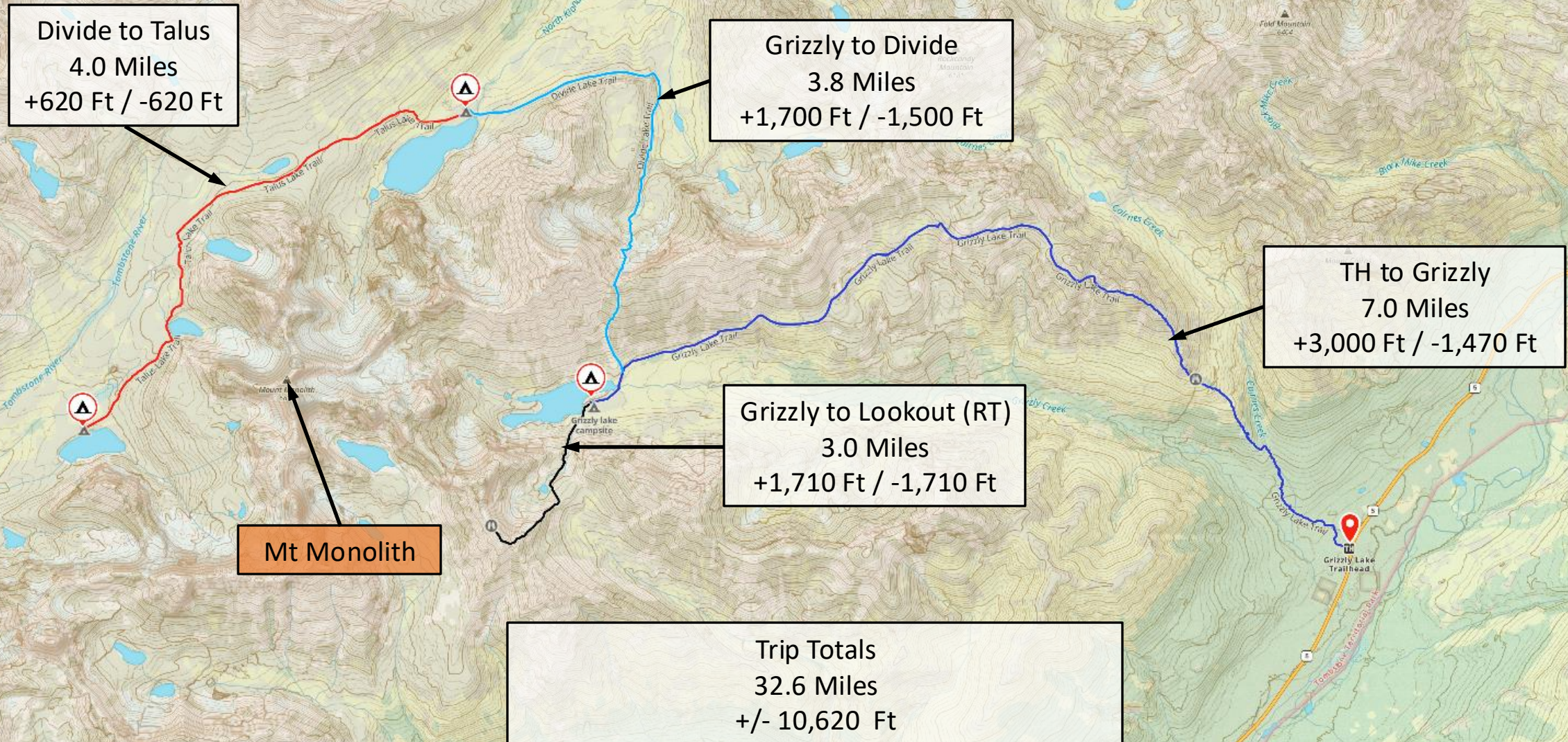
Approximately Two Days Each Way:

- Seattle to Vancouver
2.5 hr / 150 mi drive
- Vancouver to Whitehorse
2.5 hr flight
- Whitehorse to Dawson City
6hr / 330 mi drive
- Dawson City to Tombstone Interpretive Center
1.5 hr / 65 mi drive



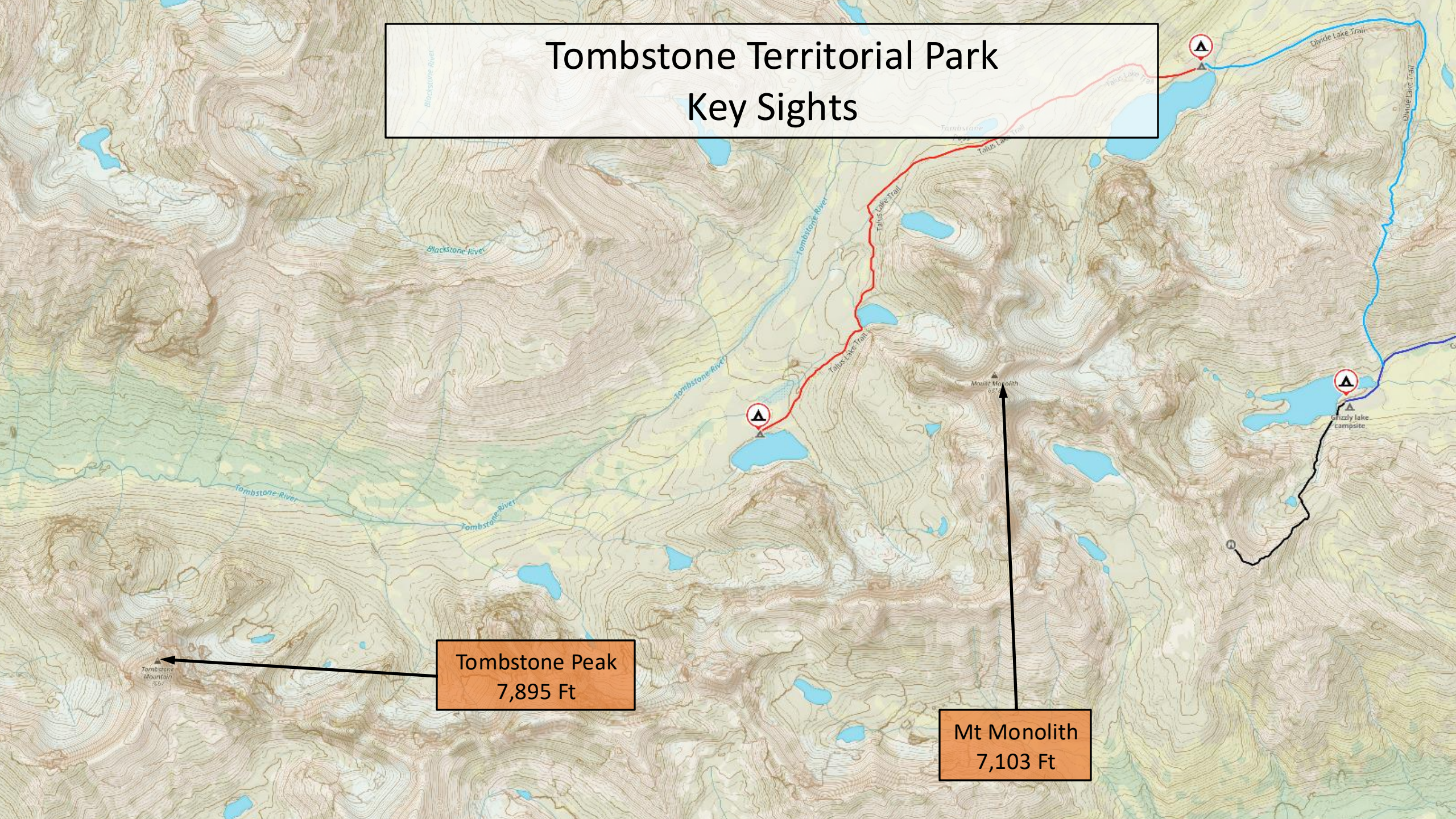
Tombstone Territorial Park

Backcountry Mileage and Elevation



Tombstone Territorial Park

Key Sights



Tombstone Peak
7,895 Ft

Mt Monolith
7,103 Ft

Grizzly lake
campsite

Reservations / Permits

- Permits become available each year in early March
 - **Permits are in high demand. Apply early !! In 2025, permits open on March 5.**
 - A great starting point for planning:
<https://yukon.ca/en/outdoor-recreation-and-wildlife/camping/hike-and-camp-tombstone-territorial-park#nav-camping-at-tombstone-territorial-parkv>
 - Create a *MyYukon* account using the "sign in" link at the top of *yukon.goingtocamp.com*. Ensure you sign in before reserving a campsite.
 - The reservation holder named when booking your reservation must be present upon arrival and throughout the stay. *Reservations are non-transferable* to another person or another campground.
 - Cost in 2025 is \$18 Canadian per night per tent.
 - Permit season is generally mid-June to mid-September (2025: June 27 to September 8) and camping outside of the permit season is not allowed.
- MUST stop at the Tombstone Interpretive Centre (1.5 hours from Dawson City)
 - Arrive at either 9:00 or 11:00 am for same-day departures, or 4:00 pm for next-day departures
 - sign in and pick up your permit, review the backcountry rules with the ranger, and show or rent your bear canisters.
 - Must watch an orientation video: https://www.youtube.com/watch?v=OJm4JWC_csA

Backcountry Camps

- Each tent camping area locations has a tent platform and protected walkways to and from all camp areas
- Backcountry Camps are provisioned very well to minimize impact to the wilderness. Common areas have:
 - Dining Tents (note: you only cook at the dining area. No cooking at your tent area).
 - Pit Toilets
 - Grey Water Barrels (dish water, toothbrush waste everything)
 - Bear lockers for food and items (bear Cannisters are still REQUIRED)

Backcountry campground facilities

Site Name	Tent Pads	Outhouse(s)	Shared Cooking Platform(s)
Grizzly Lake	14	2	2
Divide Lake	10	1	1
Talus Lake	10	1	1



Rules

- Camp ONLY on designated camping pads. No camping anywhere else!
- No more than 2 people per tent camping pad.
- Dogs are OK !!! Must be kept on a leash. Must carry / dispose of all solid dog waste.
- Stay on the designated trails.
- Pack it in / Pack it out / Leave no trace.
- No fires are allowed.



Gear Recommendations

- Driving: Bring adequate fuel, at least one spare tire, and emergency equipment
 - NOTE: some car rental agencies do not allow driving on the Dempster Highway. Check first.
- Trekking poles are very handy on this uneven terrain.
- Eye covers (for good sleep)
- Extra guy line cord to deal with the tent platforms
- Binoculars
- Bug Spray
- Bear cannisters and bear spray (spoiler - you're not likely to see a bear on this hike)
 - NOTE you cannot fly commercial with bear spray. There are places in Whitehorse to buy spray
- Be mindful of pack weight, especially for photography aficionados



Trail Conditions



- Most of the trail (50-60%) is moderate to rugged (TH-Grizzly-Divide)
- Some sections are very uneven and require attention and trekking poles
- The rest of the trail is pleasant strolling (Divide-Talus)

Weather & Seasons

	June (late)	July	August	Sept (early)
Avg High	65°F (18°C)	67°F (19°C)	62°F (16°C)	50°F (10°C)
Avg Low	48°F (8.9°C)	51°F (10°C)	46°F (7.9°C)	35°F (1.8°C)
Sunrise	4:00am	4:30am	6:00 AM	7:00am
Sunset	1:00am	midnight	10:00pm	9:00pm
Notes	Bugs Bring eye shades	Lots of bugs Bring eye shades	Fewer bugs	No bugs Best fall colors Northern Lights Riskier weather

Always check conditions!

- Wildfire Activity: <https://wildfires.service.yukon.ca/>
- Dempster road conditions: <https://weather.gc.ca/en/location/index.html?coords=66.371,-136.720>
- Mountain weather: <https://www.mountain-forecast.com/peaks/Mount-Frank-Rae/forecasts/1500>



Travel Days 1-2



Dawson City, Yukon Territory

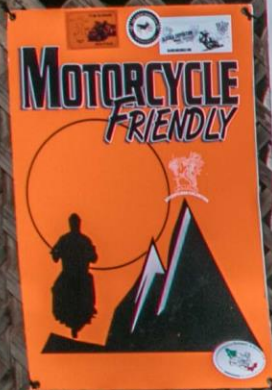
Then . . .



Now . . .

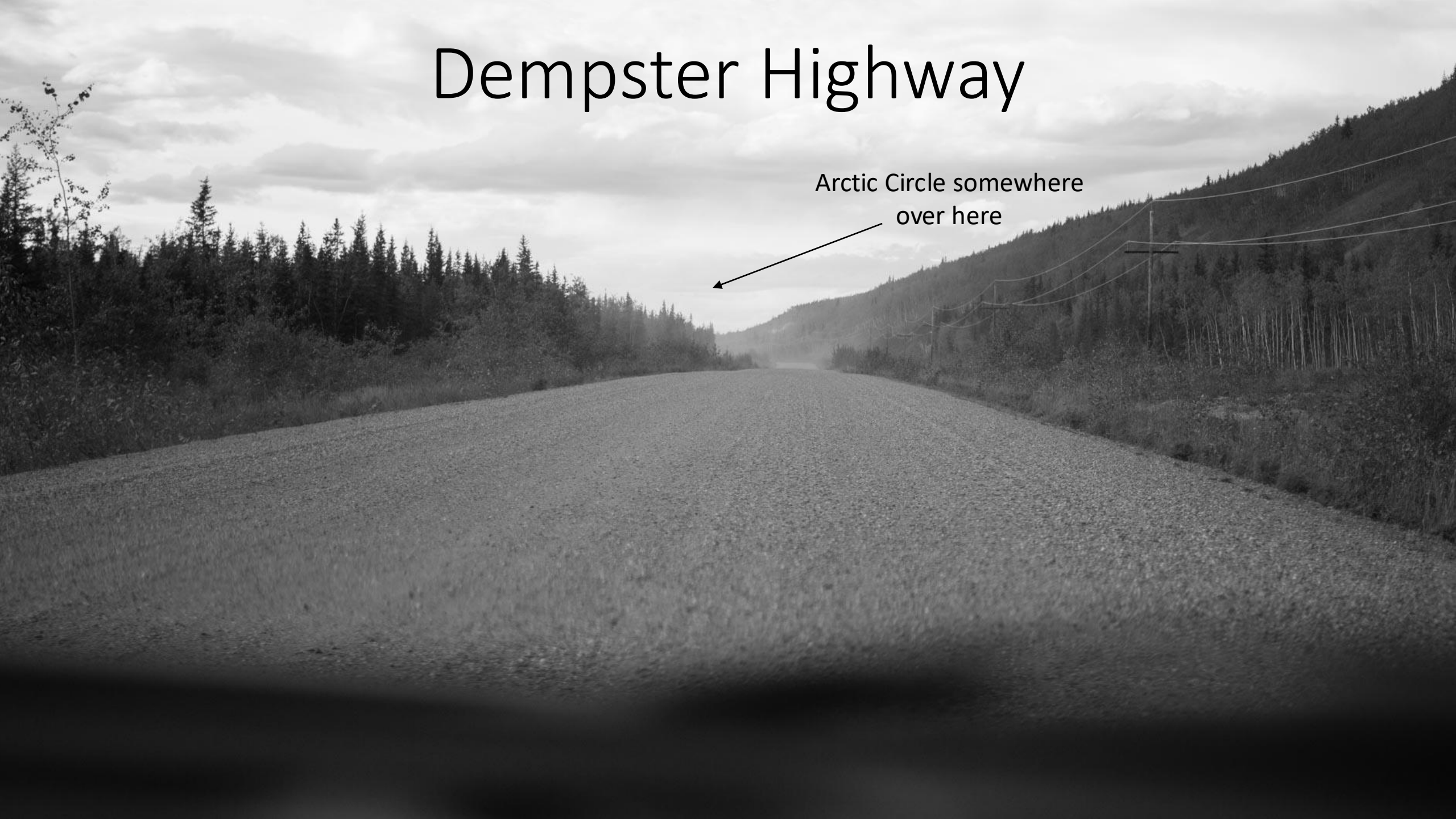


PURVEYORS
OF
CLEAN ROOMS
POTABLE SPIRITS
& FINE FOODS
COVERED HEATED PATIO

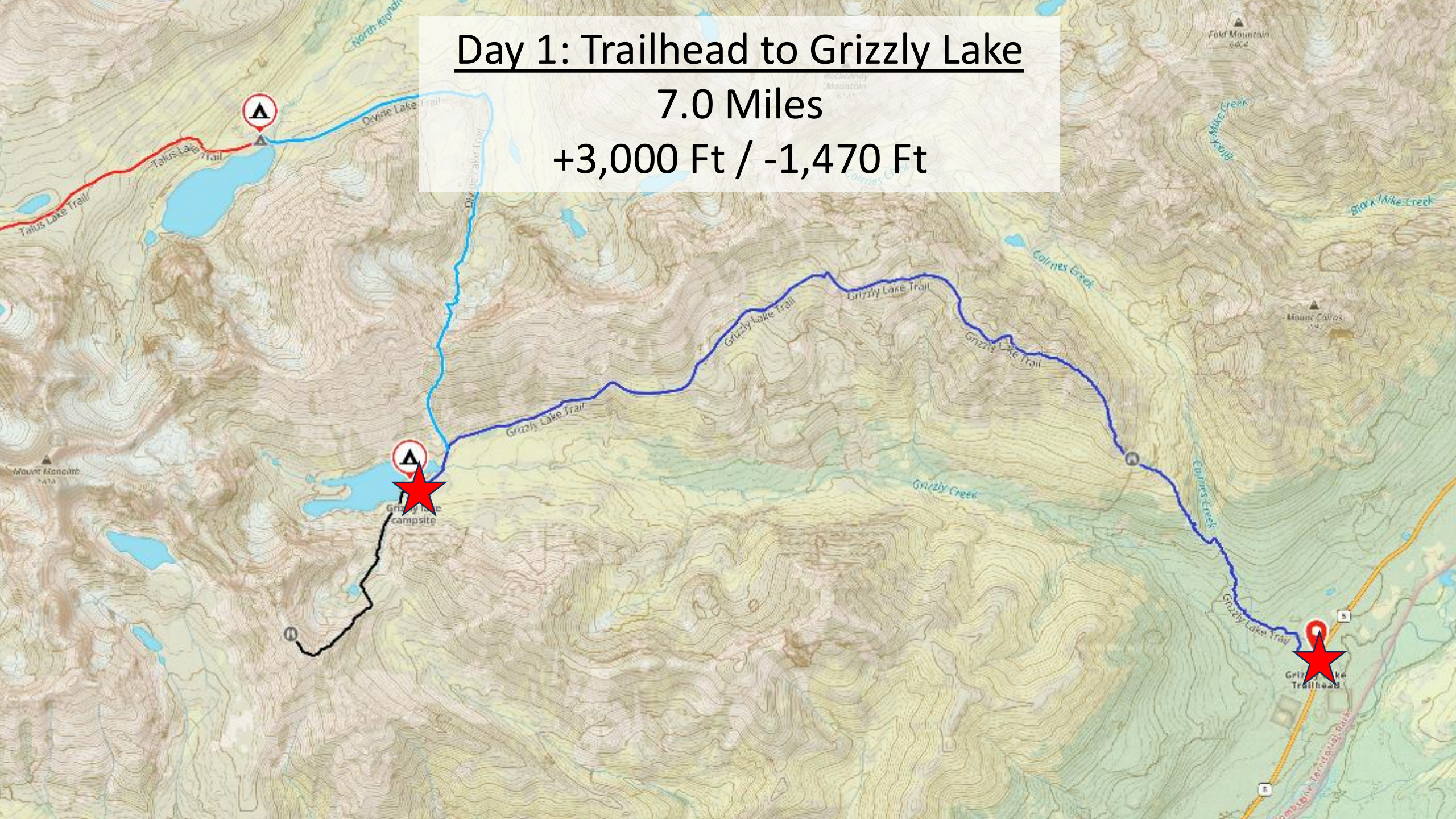


Dempster Highway

Arctic Circle somewhere
over here



Day 1: Trailhead to Grizzly Lake
7.0 Miles
+3,000 Ft / -1,470 Ft

















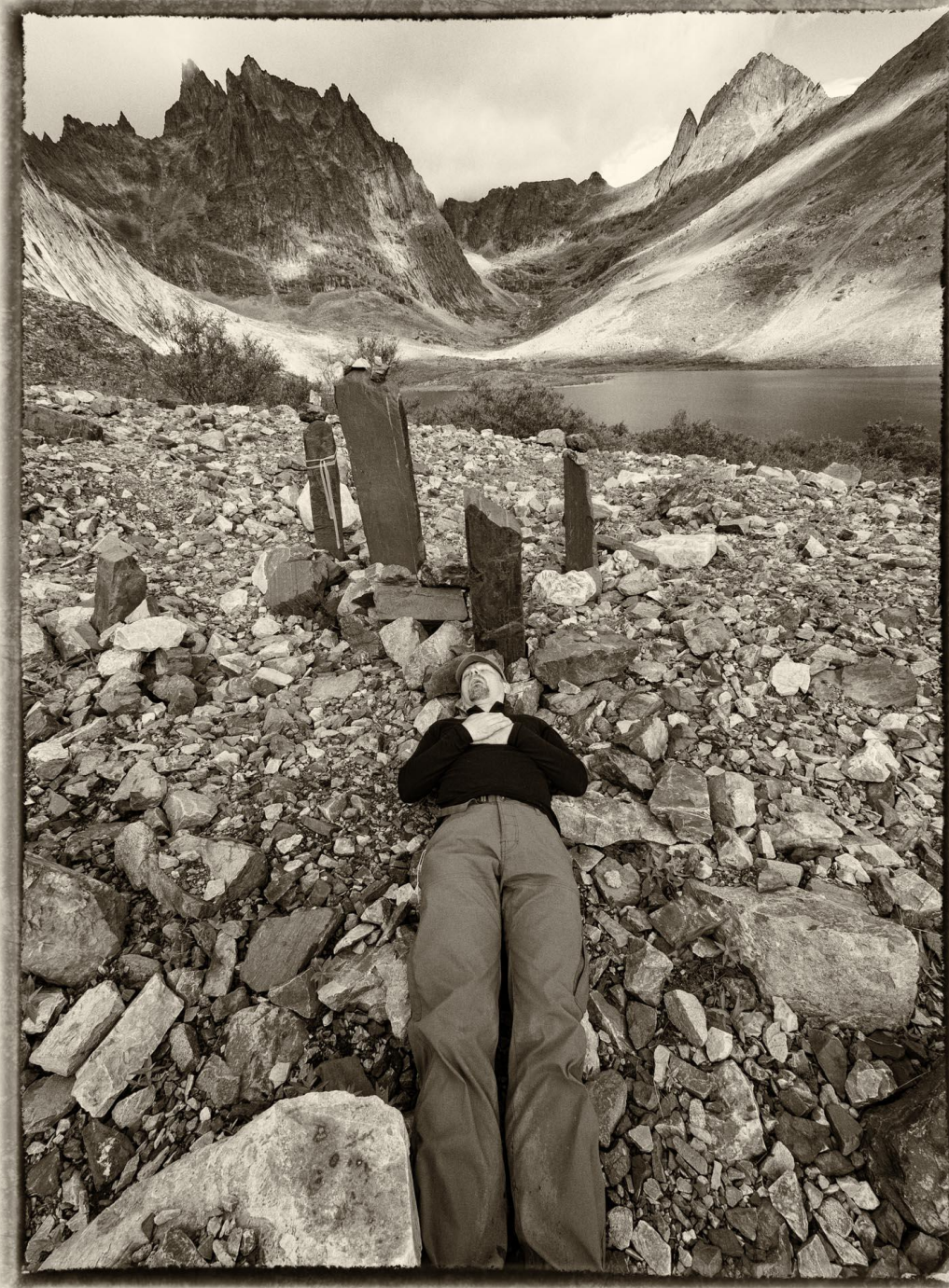




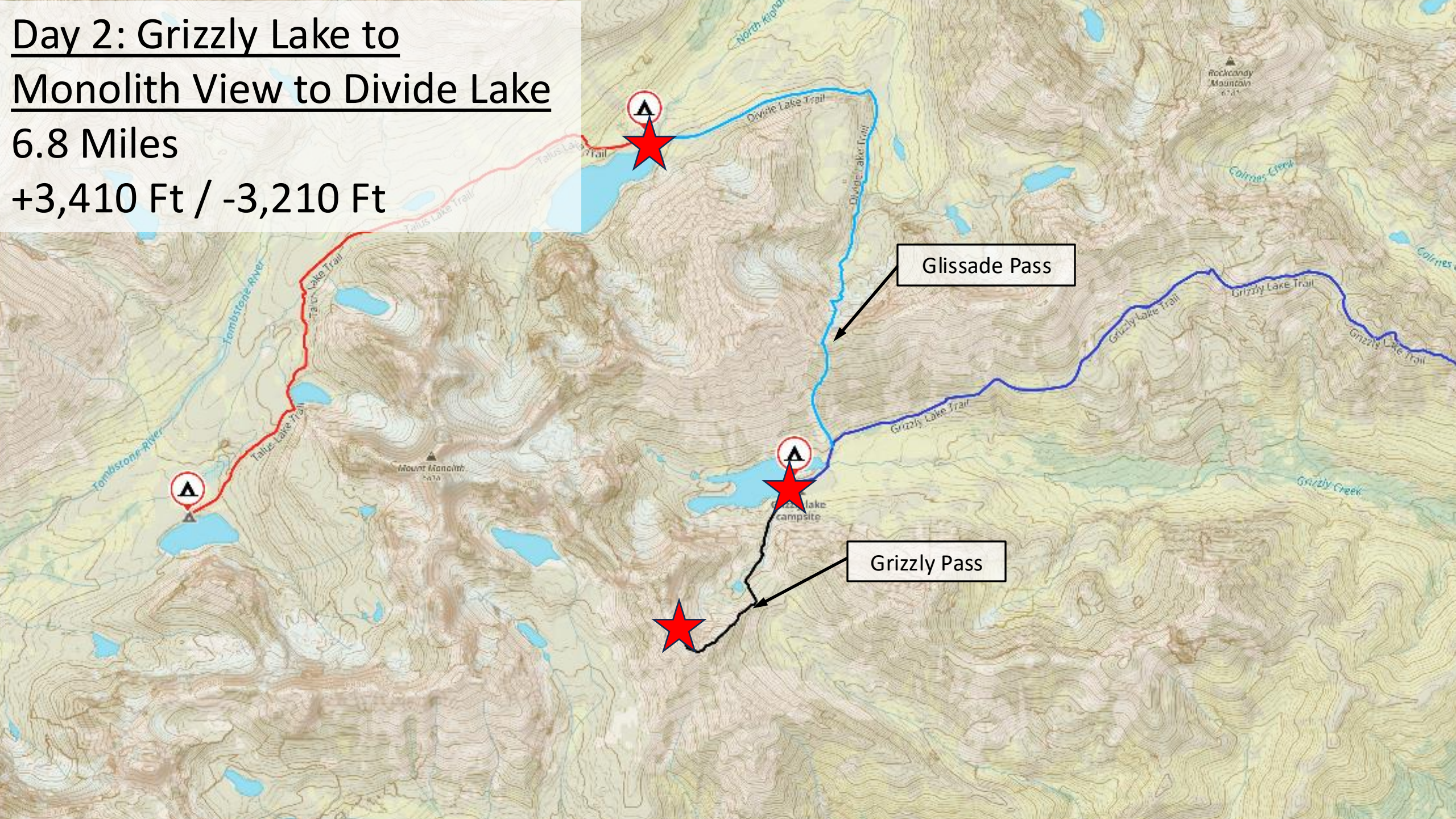




Oh so tired at the end of day 1



Day 2: Grizzly Lake to
Monolith View to Divide Lake
6.8 Miles
+3,410 Ft / -3,210 Ft



Day 2 Optional Addition: Grizzly Pass & Mount Monolith Viewpoint

3.0 Miles

+/- 1,710 Ft



Glissade Pass

Grizzly Lake Camp



