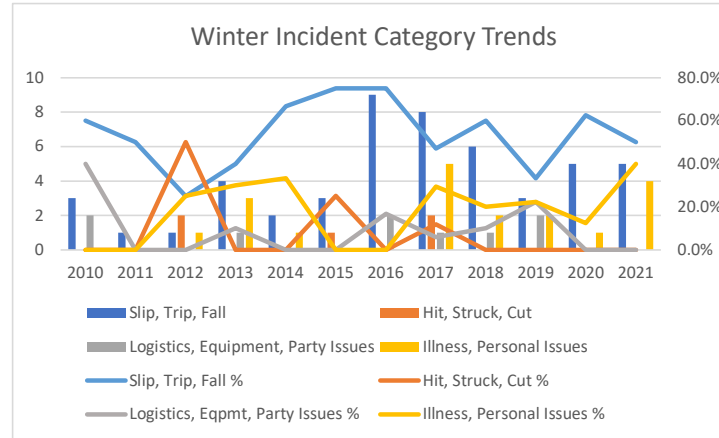
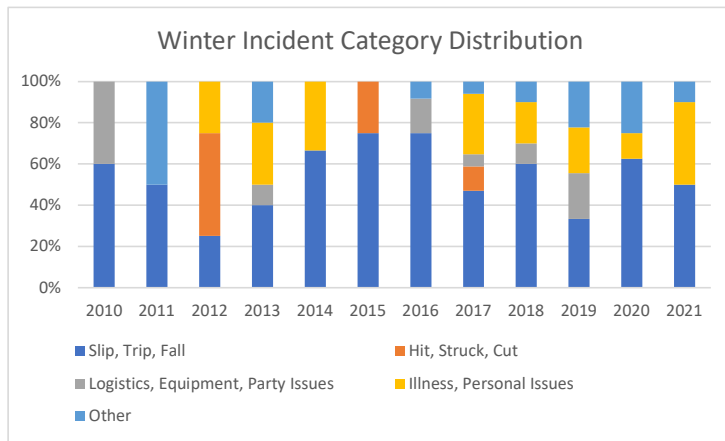


**Winter Incidents by Category**

**(Back Country Ski, Nordic Ski, Snowshoe, Winter Scramble)**

**Through Sept 2021**

	2010	2011	2012	2013	2014	2015	2016	2017	2018	2019	2020	2021
Slip, Trip, Fall	3	1	1	4	2	3	9	8	6	3	5	5
Hit, Struck, Cut	0	0	2	0	0	1	0	2	0	0	0	0
Logistics, Equipment, Party Issues	2	0	0	1	0	0	2	1	1	2	0	0
Illness, Personal Issues	0	0	1	3	1	0	0	5	2	2	1	4
Other	0	1	0	2	0	0	1	1	1	2	2	1
<b>Grand Total</b>	<b>5</b>	<b>2</b>	<b>4</b>	<b>10</b>	<b>3</b>	<b>4</b>	<b>12</b>	<b>17</b>	<b>10</b>	<b>9</b>	<b>8</b>	<b>10</b>
Slip, Trip, Fall %	60.0%	50.0%	25.0%	40.0%	66.7%	75.0%	75.0%	47.1%	60.0%	33.3%	62.5%	50.0%
Hit, Struck, Cut %	0.0%	0.0%	50.0%	0.0%	0.0%	25.0%	0.0%	11.8%	0.0%	0.0%	0.0%	0.0%
Logistics, Eqpmt, Party Issues %	40.0%	0.0%	0.0%	10.0%	0.0%	0.0%	16.7%	5.9%	10.0%	22.2%	0.0%	0.0%
Illness, Personal Issues %	0.0%	0.0%	25.0%	30.0%	33.3%	0.0%	0.0%	29.4%	20.0%	22.2%	12.5%	40.0%

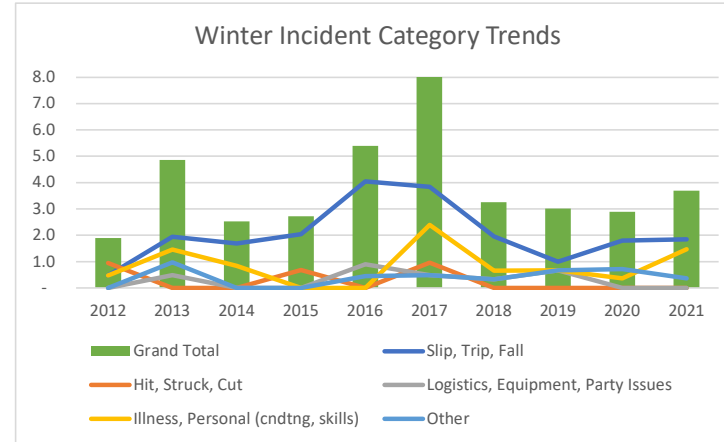
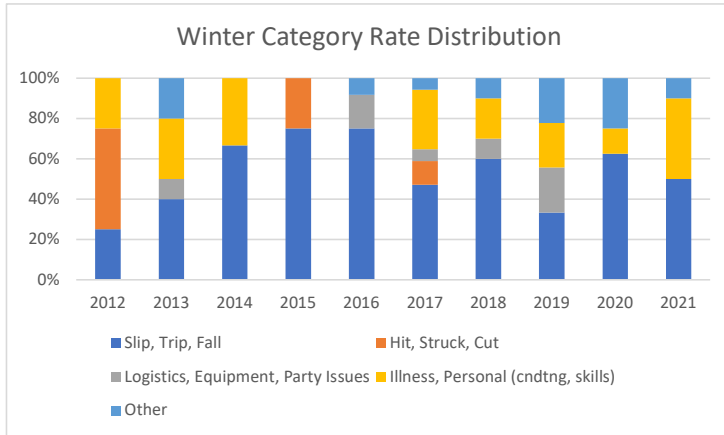


**Winter Incident Rates by Category**

**(Back Country Ski, Nordic Ski, Snowshoe, Winter Scramble)**

**Through Sept 2021**

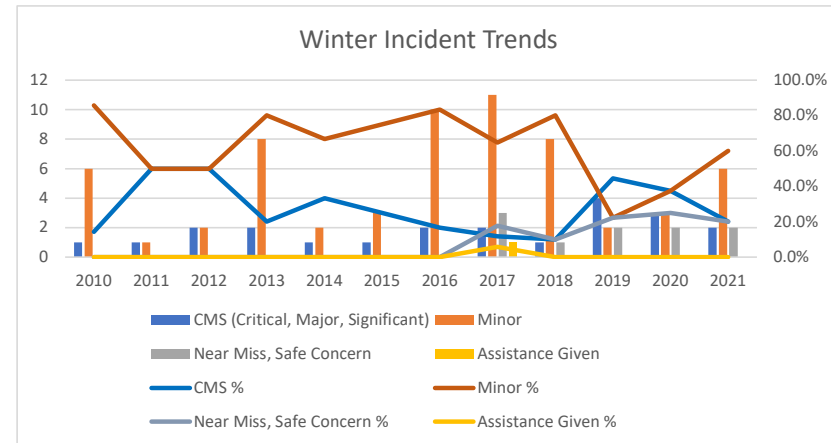
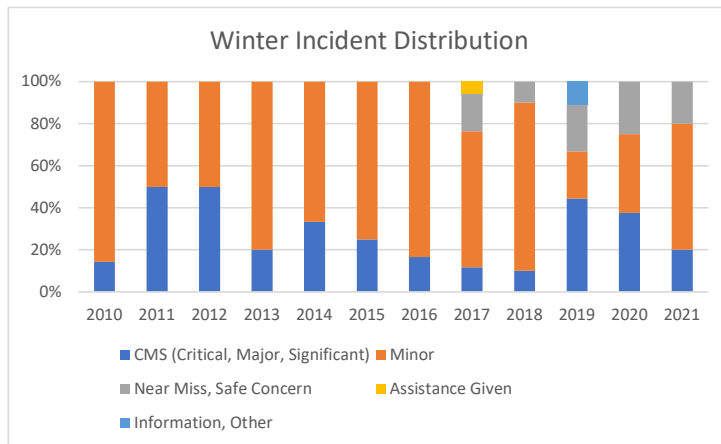
Winter Category Rates	2012	2013	2014	2015	2016	2017	2018	2019	2020	2021
Slip, Trip, Fall	0.5	1.9	1.7	2.0	4.0	3.8	2.0	1.0	1.8	1.8
Hit, Struck, Cut	0.9	-	-	0.7	-	1.0	-	-	-	-
Logistics, Equipment, Party Issues	-	0.5	-	-	0.9	0.5	0.3	0.7	-	-
Illness, Personal (cndtng, skills)	0.5	1.5	0.8	-	-	2.4	0.7	0.7	0.4	1.5
Other	-	1.0	-	-	0.4	0.5	0.3	0.7	0.7	0.4
<b>Grand Total</b>	<b>1.9</b>	<b>4.9</b>	<b>2.5</b>	<b>2.7</b>	<b>5.4</b>	<b>8.1</b>	<b>3.3</b>	<b>3.0</b>	<b>2.9</b>	<b>3.7</b>



## Winter Incidents by Severity

Through Sept 2021

	2010	2011	2012	2013	2014	2015	2016	2017	2018	2019	2020	2021
CMS (Critical, Major, Significant)	1	1	2	2	1	1	2	2	1	4	3	2
Minor	6	1	2	8	2	3	10	11	8	2	3	6
Near Miss, Safe Concern	0	0	0	0	0	0	0	3	1	2	2	2
Assistance Given	0	0	0	0	0	0	0	1	0	0	0	0
Information, Other	0	0	0	0	0	0	0	0	0	1	0	0
<b>Total</b>	<b>7</b>	<b>2</b>	<b>4</b>	<b>10</b>	<b>3</b>	<b>4</b>	<b>12</b>	<b>17</b>	<b>10</b>	<b>9</b>	<b>8</b>	<b>10</b>
CMS %	14.3%	50.0%	50.0%	20.0%	33.3%	25.0%	16.7%	11.8%	10.0%	44.4%	37.5%	20.0%
Minor %	85.7%	50.0%	50.0%	80.0%	66.7%	75.0%	83.3%	64.7%	80.0%	22.2%	37.5%	60.0%
Near Miss, Safe Concern %	0.0%	0.0%	0.0%	0.0%	0.0%	0.0%	0.0%	17.6%	10.0%	22.2%	25.0%	20.0%
Assistance Given %	0.0%	0.0%	0.0%	0.0%	0.0%	0.0%	0.0%	5.9%	0.0%	0.0%	0.0%	0.0%
Information, Other %	0.0%	0.0%	0.0%	0.0%	0.0%	0.0%	0.0%	0.0%	0.0%	11.1%	0.0%	0.0%
<b>Total</b>												



### Winter Incident Rates by Severity

	2012	2013	2014	2015	2016	2017	2018	2019	2020	2021
CMS (Critical, Major, Significant)	0.9	1.0	0.8	0.7	0.9	1.0	0.3	1.3	1.1	0.7
Minor	0.9	3.9	1.7	2.0	4.5	5.3	2.6	0.7	1.1	2.2
Near Miss, Safe Concern	-	-	-	-	-	1.4	0.3	0.7	0.7	0.7
Assistance Given	-	-	-	-	-	0.5	-	-	-	-
Information, Other	-	-	-	-	-	-	-	0.3	-	-
<b>Total</b>	<b>1.9</b>	<b>4.9</b>	<b>2.5</b>	<b>2.7</b>	<b>5.4</b>	<b>8.1</b>	<b>3.3</b>	<b>3.0</b>	<b>2.9</b>	<b>3.7</b>

Thorough Sept 2021

