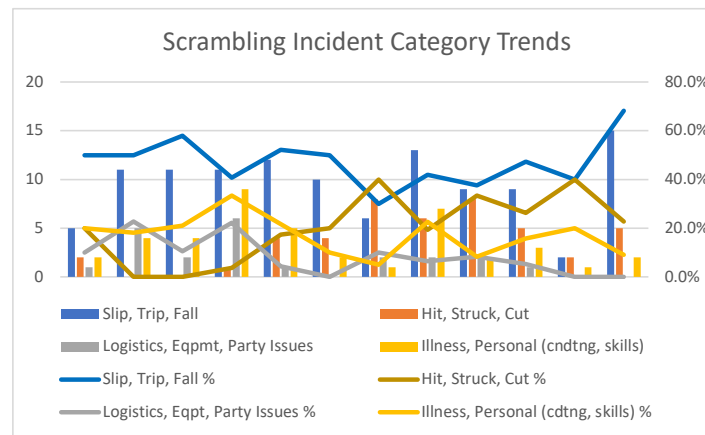
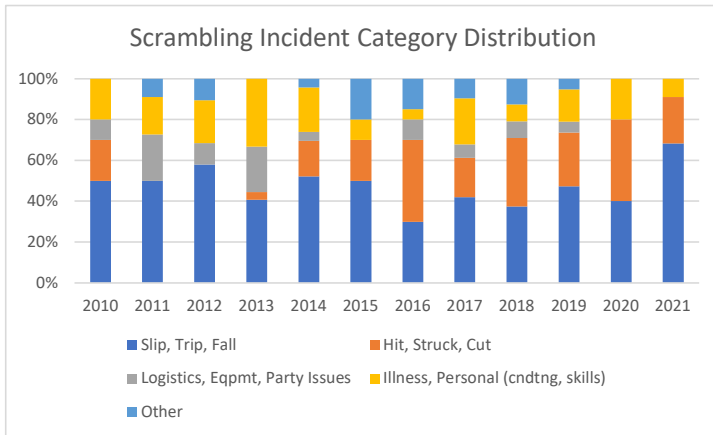


Scrambling Incidents by Category

Through Sept 2021

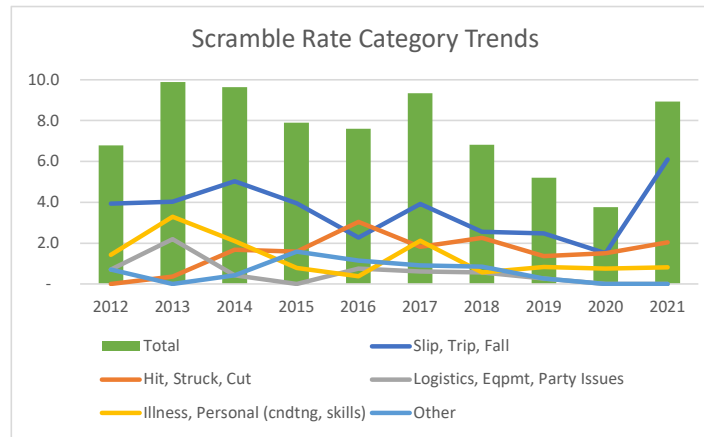
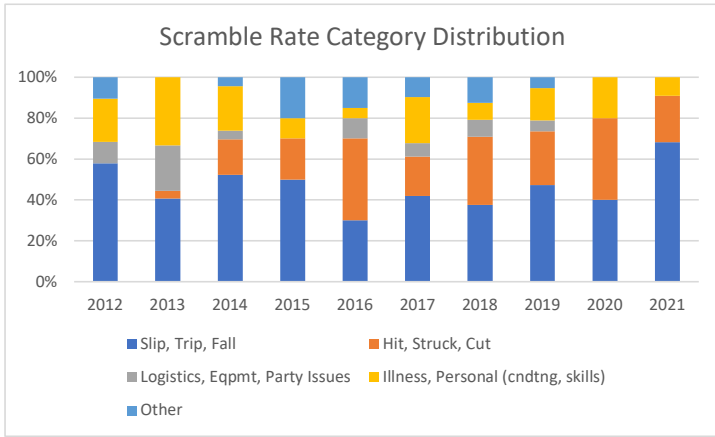
	2010	2011	2012	2013	2014	2015	2016	2017	2018	2019	2020	2021
Slip, Trip, Fall	5	11	11	11	12	10	6	13	9	9	2	15
Hit, Struck, Cut	2	0	0	1	4	4	8	6	8	5	2	5
Logistics, Eqpmt, Party Issues	1	5	2	6	1	0	2	2	2	1	0	0
Illness, Personal (cndtng, skills)	2	4	4	9	5	2	1	7	2	3	1	2
Other	0	2	2	0	1	4	3	3	3	1	0	0
Total	10	22	19	27	23	20	20	31	24	19	5	22
Slip, Trip, Fall %	50.0%	50.0%	57.9%	40.7%	52.2%	50.0%	30.0%	41.9%	37.5%	47.4%	40.0%	68.2%
Hit, Struck, Cut %	20.0%	0.0%	0.0%	3.7%	17.4%	20.0%	40.0%	19.4%	33.3%	26.3%	40.0%	22.7%
Logistics, Eqpt, Party Issues %	10.0%	22.7%	10.5%	22.2%	4.3%	0.0%	10.0%	6.5%	8.3%	5.3%	0.0%	0.0%
Illness, Personal (cndtng, skills) %	20.0%	18.2%	21.1%	33.3%	21.7%	10.0%	5.0%	22.6%	8.3%	15.8%	20.0%	9.1%



Scrambling Incident Rates by Category

Through Sept 2021

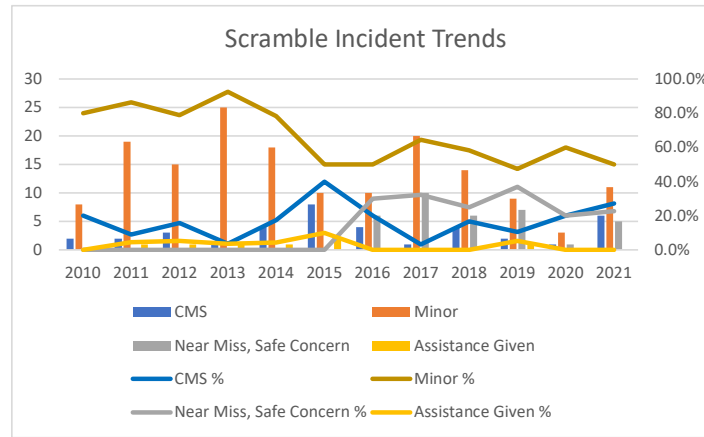
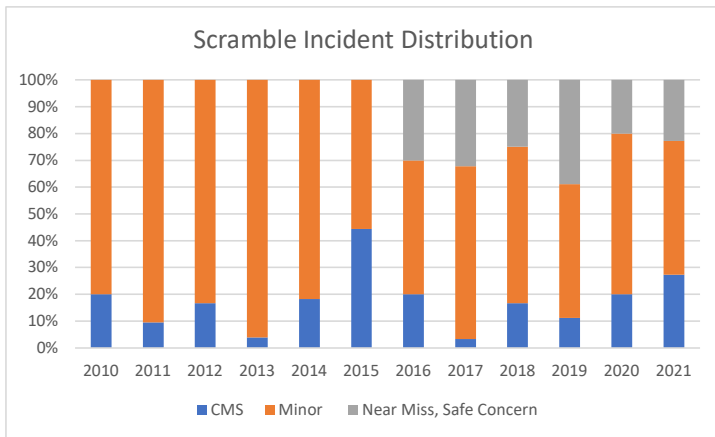
	2012	2013	2014	2015	2016	2017	2018	2019	2020	2021
Slip, Trip, Fall	3.9	4.0	5.0	3.9	2.3	3.9	2.6	2.5	1.5	6.1
Hit, Struck, Cut	-	0.4	1.7	1.6	3.0	1.8	2.3	1.4	1.5	2.0
Logistics, Eqpmt, Party Issues	0.7	2.2	0.4	-	0.8	0.6	0.6	0.3	-	-
Illness, Personal (cndtng, skills)	1.4	3.3	2.1	0.8	0.4	2.1	0.6	0.8	0.8	0.8
Other	0.7	-	0.4	1.6	1.1	0.9	0.9	0.3	-	-
Total	6.8	9.9	9.6	7.9	7.6	9.3	6.8	5.2	3.8	8.9



Scramble Incidents by Severity

Through Sept 2021

	2010	2011	2012	2013	2014	2015	2016	2017	2018	2019	2020	2021
CMS	2	2	3	1	4	8	4	1	4	2	1	6
Minor	8	19	15	25	18	10	10	20	14	9	3	11
Near Miss, Safe Concern	0	0	0	0	0	0	6	10	6	7	1	5
Assistance Given	0	1	1	1	1	2	0	0	0	1	0	0
Information, Other	0	0	0	0	0	0	0	0	0	0	0	0
Total	10	22	19	27	23	20	20	31	24	19	5	22
CMS %	20.0%	9.1%	15.8%	3.7%	17.4%	40.0%	20.0%	3.2%	16.7%	10.5%	20.0%	27.3%
Minor %	80.0%	86.4%	78.9%	92.6%	78.3%	50.0%	50.0%	64.5%	58.3%	47.4%	60.0%	50.0%
Near Miss, Safe Concern %	0.0%	0.0%	0.0%	0.0%	0.0%	0.0%	30.0%	32.3%	25.0%	36.8%	20.0%	22.7%
Assistance Given %	0.0%	4.5%	5.3%	3.7%	4.3%	10.0%	0.0%	0.0%	0.0%	5.3%	0.0%	0.0%
Information, Other %	0.0%	0.0%	0.0%	0.0%	0.0%	0.0%	0.0%	0.0%	0.0%	0.0%	0.0%	0.0%
Total												



Scrambling Incident Rates by Severity

	2012	2013	2014	2015	2016	2017	2018	2019	2020	2021
CMS	1.1	0.4	1.7	3.2	1.5	0.3	1.1	0.5	0.8	2.4
Minor	5.4	9.2	7.5	3.9	3.8	6.0	4.0	2.5	2.3	4.5
Near Miss, Safe Concern	-	-	-	-	2.3	3.0	1.7	1.9	0.8	2.0
Assistance Given	0.4	0.4	0.4	0.8	-	-	-	0.3	-	-
Information, Other	-	-	-	-	-	-	-	-	-	-
Total	6.8	9.9	9.6	7.9	7.6	9.3	6.8	5.2	3.8	8.9

