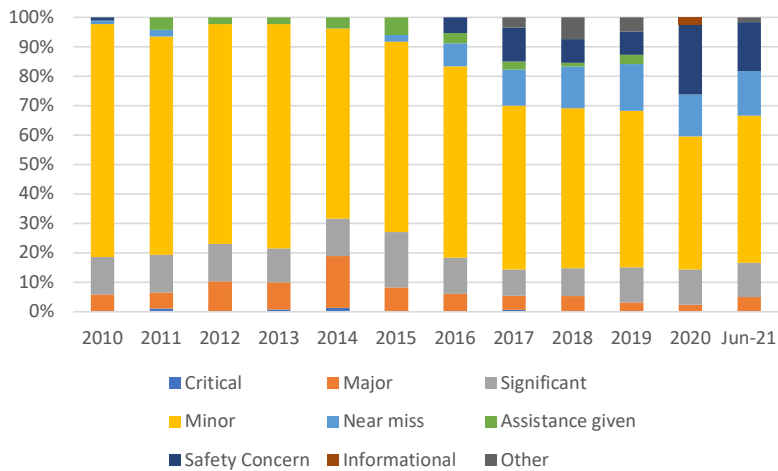
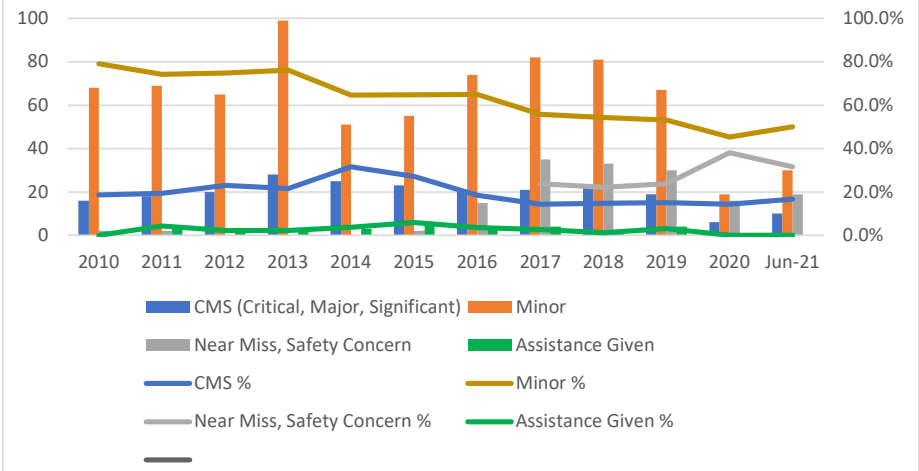


Org Level Incidents	2010	2011	2012	2013	2014	2015	2016	2017	2018	2019	2020	Jun-21	Grand Total
Critical		1		1	1			1					4
Major	5	5	9	12	14	7	7	7	8	4	1	3	82
Significant	11	12	11	15	10	16	14	13	14	15	5	7	143
Minor	68	69	65	99	51	55	74	82	81	67	19	30	760
Near miss	1	2				2	9	18	21	20	6	9	88
Assistance given		4	2	3	3	5	4	4	2	4		0	31
Safety Concern	1						6	17	12	10	10	10	66
Informational											1	0	1
Other								5	11	6		1	23
Grand Total	86	93	87	130	79	85	114	147	149	126	42	60	1198
CMS (Critical, Major, Significant)	16	18	20	28	25	23	21	21	22	19	6	10	229
Minor	68	69	65	99	51	55	74	82	81	67	19	30	760
Near Miss, Safety Concern	2	2	0	0	0	2	15	35	33	30	16	19	154
Assistance Given	0	4	2	3	3	5	4	4	2	4	0	0	31
CMS %	18.6%	19.4%	23.0%	21.5%	31.6%	27.1%	18.4%	14.3%	14.8%	15.1%	14.3%	16.7%	19.1%
Minor %	79.1%	74.2%	74.7%	76.2%	64.6%	64.7%	64.9%	55.8%	54.4%	53.2%	45.2%	50.0%	63.4%
Near Miss, Safety Concern %								23.8%	22.1%	23.8%	38.1%	31.7%	12.9%
Assistance Given %	0.0%	4.3%	2.3%	2.3%	3.8%	5.9%	3.5%	2.7%	1.3%	3.2%	0.0%	0.0%	2.6%

Incident Type Distribution



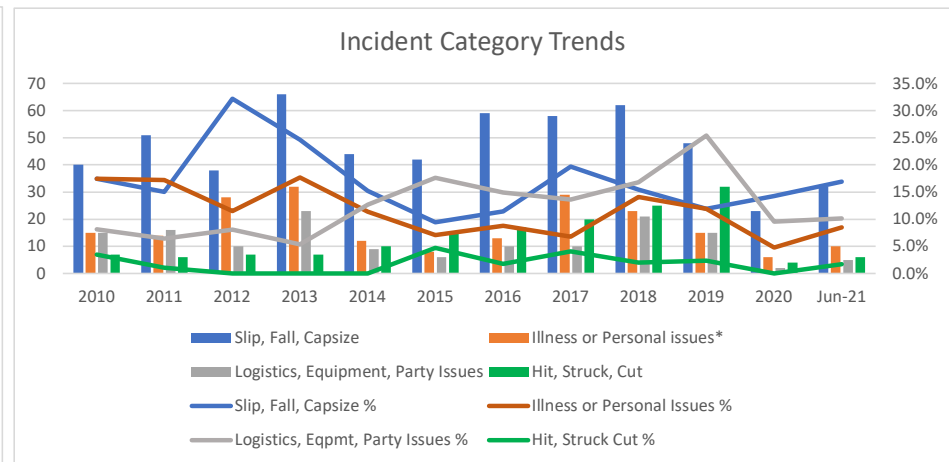
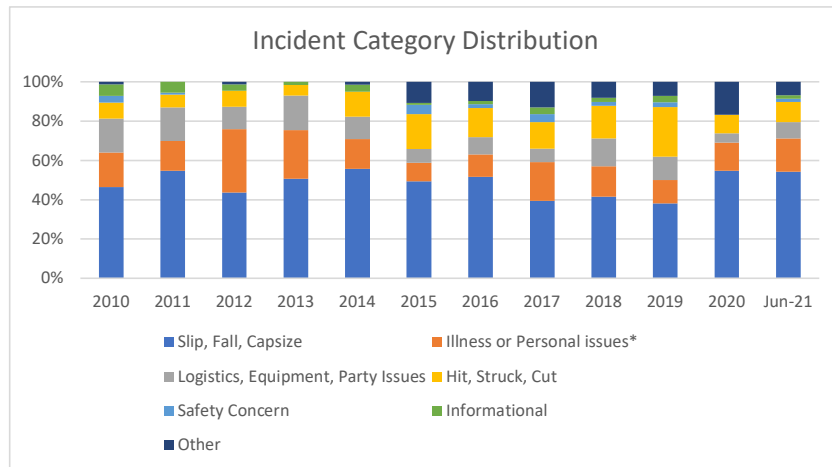
Incident Type Trends



Org Level Categories	2010	2011	2012	2013	2014	2015	2016	2017	2018	2019	2020	Jun-21	Grand Total
Slip, Fall, Capsize	40	51	38	66	44	42	59	58	62	48	23	32	563
Illness or Personal issues*	15	14	28	32	12	8	13	29	23	15	6	10	205
Logistics, Equipment, Party Issues	15	16	10	23	9	6	10	10	21	15	2	5	142
Hit, Struck, Cut	7	6	7	7	10	15	17	20	25	32	4	6	156
Safety Concern	3	1				4	2	6	3	3		1	23
Informational	5	5	3	2	3	1	2	5	3	4		1	34
Other	1		1		1	9	11	19	12	9	7	4	74
Grand Total	86	93	87	130	79	85	114	147	149	126	42	59	1197

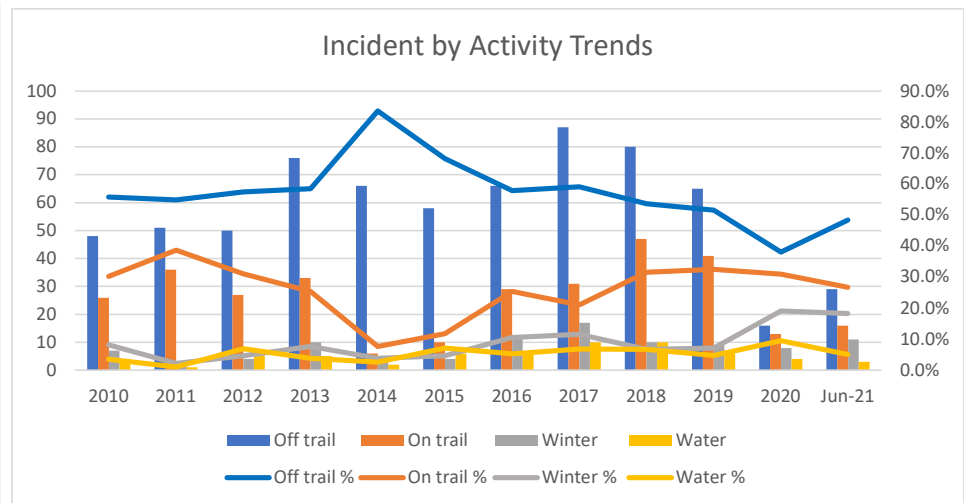
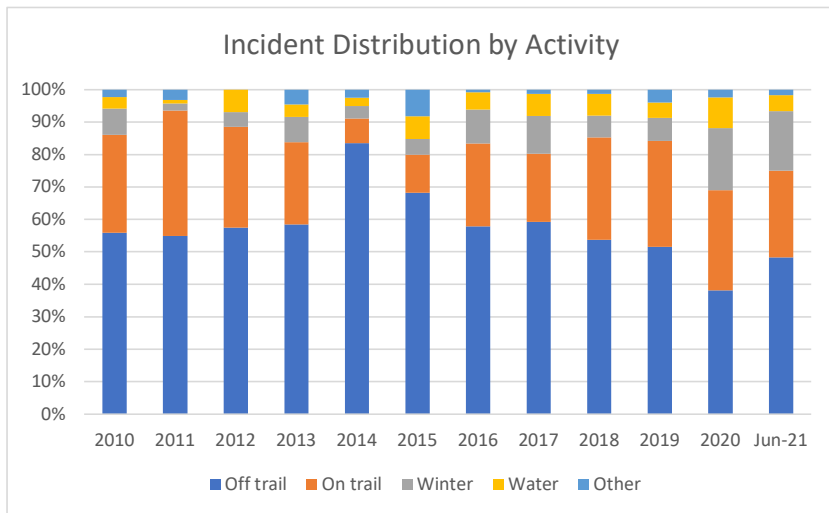
* conditioning, lack of skill

Slip, Fall, Capsize %	17.4%	15.1%	32.2%	24.6%	15.2%	9.4%	11.4%	19.7%	15.4%	11.9%	14.3%	16.9%	17.1%
Illness or Personal Issues %	17.4%	17.2%	11.5%	17.7%	11.4%	7.1%	8.8%	6.8%	14.1%	11.9%	4.8%	8.5%	11.9%
Logistics, Eqpmt, Party Issues %	8.1%	6.5%	8.0%	5.4%	12.7%	17.6%	14.9%	13.6%	16.8%	25.4%	9.5%	10.2%	13.0%
Hit, Struck Cut %	3.5%	1.1%	0.0%	0.0%	0.0%	4.7%	1.8%	4.1%	2.0%	2.4%	0.0%	1.7%	1.9%



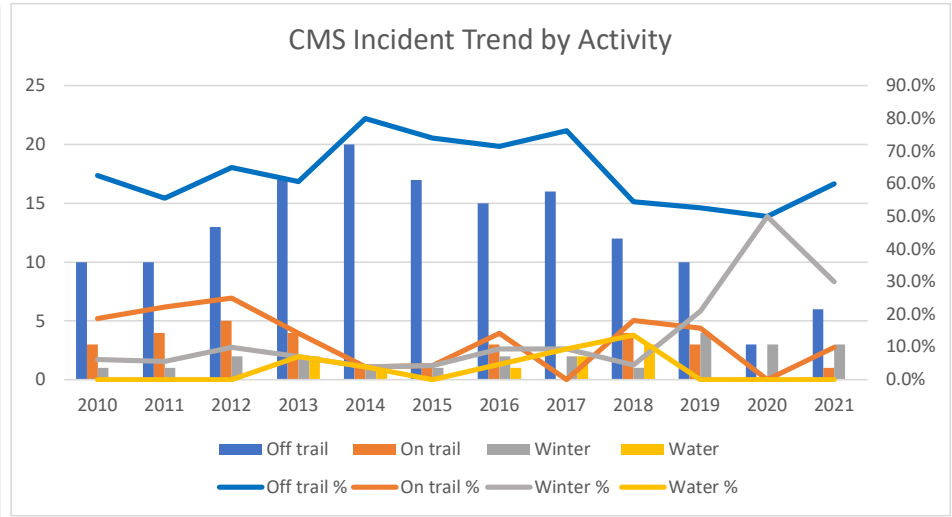
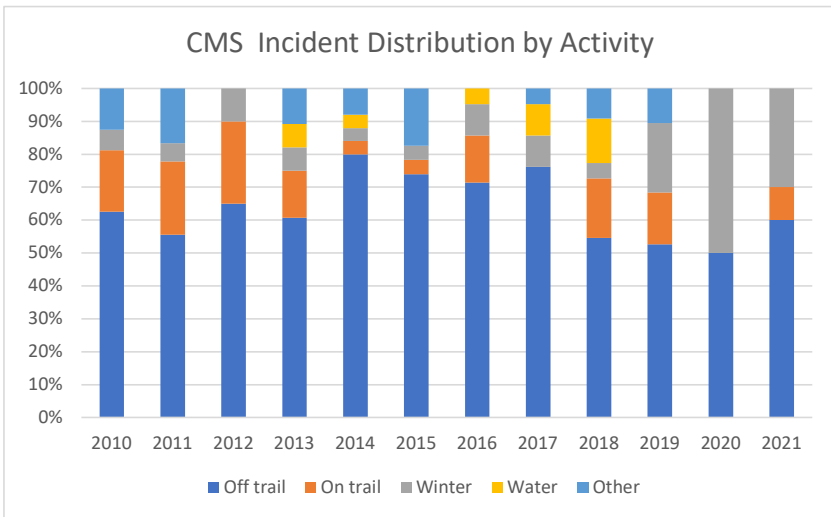
Org Incident by Activity	2010	2011	2012	2013	2014	2015	2016	2017	2018	2019	2020	Jun-21	Grand Total
Avalanche	2								1				3
Avalanche Safety											1		1
Backcountry Skiing	1		2	2	1					5	1	0	12
Backpacking	1	1	1	4	1	2	3	6	7	11	2	2	41
Canyoning										2		2	4
Climbing	37	29	31	48	41	37	46	59	53	42	11	12	446
Day Hiking	23	33	25	28	5	8	22	21	35	29	9	12	250
Downhill Skiing & Snowboarding		1											1
Event	1							1					2
First Aid							1		1				2
Folk dance				1									1
Navigation	2			2	2	1	5	4	3	2			21
Nordic Skiing				4	1	3	3	4	3	1	4	2	25
photography	1							1					2
Properties, Program Centers, Lodge	1	3		4	2					2			12
Sailing						2			2				4
Scrambling	9	22	19	26	23	20	15	24	24	19	5	15	221
Sea Kayaking	3	1	6	5	2	4	6	10	8	6	4	3	58
Snowshoeing	3	1	2	3	1	1	3	5	2	2	1	3	27
Stewardship	1	1	1	1			4	3	2	1			14
Theatre				1				1					2
Trail Running									1			2	3
Urban Adventure		1							2		2		5
Winter Scramble	1			1			6	8	4	1	1	6	28
Youth Programs - camp, Mac, etc						7			1	3	1	1	13
(blank)													0
Grand Total	86	93	87	130	79	85	114	147	149	126	42	60	1198

Org Incident by Group	2010	2011	2012	2013	2014	2015	2016	2017	2018	2019	2020	Jun-21	Grand Total
Off trail	48	51	50	76	66	58	66	87	80	65	16	29	692
On trail	26	36	27	33	6	10	29	31	47	41	13	16	315
Winter	7	2	4	10	3	4	12	17	10	9	8	11	97
Water	3	1	6	5	2	6	6	10	10	6	4	3	62
Other	2	3	0	6	2	7	1	2	2	5	1	1	32
Total	86	93	87	130	79	85	114	147	149	126	42	60	1198
Off trail %	55.8%	54.8%	57.5%	58.5%	83.5%	68.2%	57.9%	59.2%	53.7%	51.6%	38.1%	48.3%	
On trail %	30.2%	38.7%	31.0%	25.4%	7.6%	11.8%	25.4%	21.1%	31.5%	32.5%	31.0%	26.7%	
Winter %	8.1%	2.2%	4.6%	7.7%	3.8%	4.7%	10.5%	11.6%	6.7%	7.1%	19.0%	18.3%	
Water %	3.5%	1.1%	6.9%	3.8%	2.5%	7.1%	5.3%	6.8%	6.7%	4.8%	9.5%	5.0%	

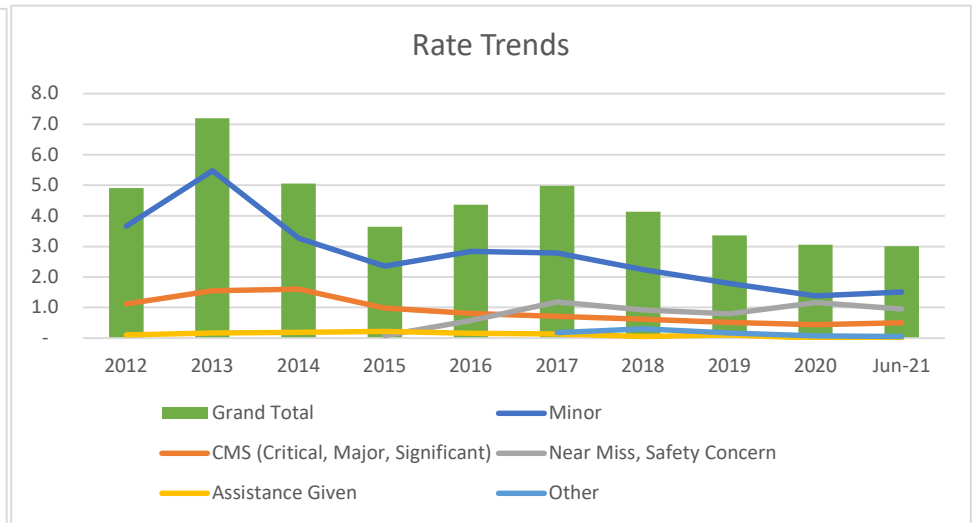
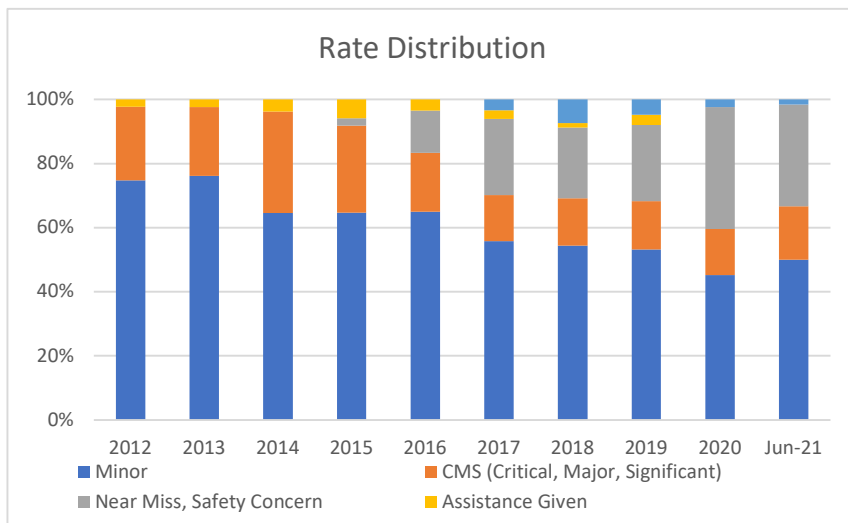


CMS Incident by Activity	2010	2011	2012	2013	2014	2015	2016	2017	2018	2019	2020	2021	Grand Total
Backcountry Skiing	1		1							2			4
Backpacking					1		1		3	2			7
Canyoning										1		1	2
Climbing	8	8	10	15	15	9	11	13	7	7	2	1	106
Day Hiking	3	3	5	4		1	2		1	1		1	21
Downhill Skiing & Snowboarding		1											1
Folk dance				1									1
Navigation				1	1			1					3
Nordic Skiing				1	1	1	2	1	1	1	2	2	12
Properties, Program Centers, Lodge	1	2		1	2					1			7
Scrambling	2	2	3	1	4	8	4	2	5	2	1	4	38
Sea Kayaking				2	1		1	2	3				9
Snowshoeing			1	1						1			3
Stewardship	1	1		1					1				4
Theatre								1					1
Urban Adventure		1											1
Winter Scramble								1			1	1	3
Youth Programs - camp, Mac, etc						4			1	1			6
Grand Total	16	18	20	28	25	23	21	21	22	19	6	10	229

CMS Incident by Group	2010	2011	2012	2013	2014	2015	2016	2017	2018	2019	2020	2021	Grand Total
Off trail	10	10	13	17	20	17	15	16	12	10	3	6	149
On trail	3	4	5	4	1	1	3	0	4	3	0	1	29
Winter	1	1	2	2	1	1	2	2	1	4	3	3	23
Water	0	0	0	2	1	0	1	2	3	0	0	0	9
Other	2	3	0	3	2	4	0	1	2	2	0	0	19
Total	16	18	20	28	25	23	21	21	22	19	6	10	229
Off trail %	62.5%	55.6%	65.0%	60.7%	80.0%	73.9%	71.4%	76.2%	54.5%	52.6%	50.0%	60.0%	65.1%
On trail %	18.8%	22.2%	25.0%	14.3%	4.0%	4.3%	14.3%	0.0%	18.2%	15.8%	0.0%	10.0%	12.7%
Winter %	6.3%	5.6%	10.0%	7.1%	4.0%	4.3%	9.5%	9.5%	4.5%	21.1%	50.0%	30.0%	10.0%
Water %	0.0%	0.0%	0.0%	7.1%	4.0%	0.0%	4.8%	9.5%	13.6%	0.0%	0.0%	0.0%	3.9%



Org Incident Rates by Severity	2012	2013	2014	2015	2016	2017	2018	2019	2020	Jun-21	Grand Total
Critical	-	0.1	0.1	-	-	0.0	-	-	-	-	0.0
Major	0.5	0.7	0.9	0.3	0.3	0.2	0.2	0.1	0.1	0.2	0.3
Significant	0.6	0.8	0.6	0.7	0.5	0.4	0.4	0.4	0.4	0.4	0.6
Minor	3.7	5.5	3.3	2.4	2.8	2.8	2.2	1.8	1.4	1.5	3.2
Near miss	-	-	-	0.1	0.3	0.6	0.6	0.5	0.4	0.5	0.4
Assistance given	0.1	0.2	0.2	0.2	0.2	0.1	0.1	0.1	-	-	0.1
Safety Concern	-	-	-	-	0.2	0.6	0.3	0.3	0.7	0.5	0.3
Informational	-	-	-	-	-	-	-	-	0.1	-	0.0
OTHER	-	-	-	-	-	0.2	0.3	0.2	-	0.1	0.1
Grand Total	4.9	7.2	5.1	3.6	4.4	5.0	4.1	3.4	3.1	3.0	5.0
Minor	3.7	5.5	3.3	2.4	2.8	2.8	2.2	1.8	1.4	1.5	3.2
CMS (Critical, Major, Significant)	1.1	1.5	1.6	1.0	0.8	0.7	0.6	0.5	0.4	0.5	1.0
Near Miss, Safety Concern				0.1	0.6	1.2	0.9	0.8	1.2	1.0	0.6
Assistance Given	0.1	0.2	0.2	0.2	0.2	0.1	0.1	0.1	-	-	0.1
Other						0.2	0.3	0.2	0.1	0.1	0.1
Grand Total	4.9	7.2	5.1	3.6	4.4	5.0	4.1	3.4	3.1	3.0	5.0



Org Category Rates	2012	2013	2014	2015	2016	2017	2018	2019	2020	2021	Grand Total
Slip, Fall, Capsize	2.1	3.7	2.8	1.8	2.3	2.0	1.7	1.3	1.7	1.6	2.4
Illness or Personal issues*	1.6	1.8	0.8	0.3	0.5	1.0	0.6	0.4	0.4	0.5	0.9
Logistics, Equipment, Party Issues	0.6	1.3	0.6	0.3	0.4	0.3	0.6	0.4	0.1	0.3	0.6
Hit, Struck, Cut	0.4	0.4	0.6	0.6	0.7	0.7	0.7	0.9	0.3	0.3	0.7
Safety Concern	-	-	-	0.2	0.1	0.2	0.1	0.1	-	0.1	0.1
Informational	0.2	0.1	0.2	0.0	0.1	0.2	0.1	0.1	-	0.1	0.1
Other	0.1	-	0.1	0.4	0.4	0.6	0.3	0.2	0.5	0.2	0.3
Grand Total	4.9	7.2	5.1	3.6	4.4	5.0	4.1	3.4	3.1	3.0	5.0

