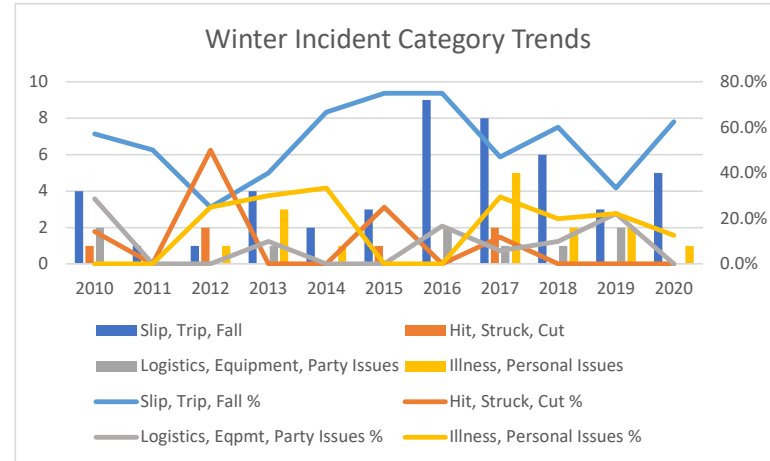
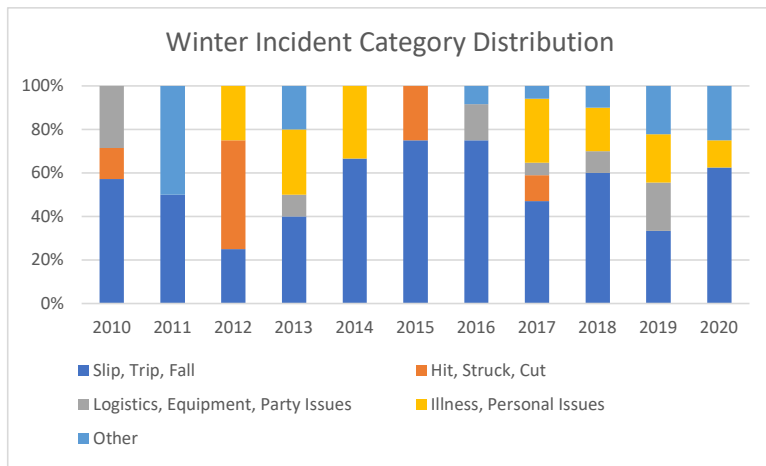
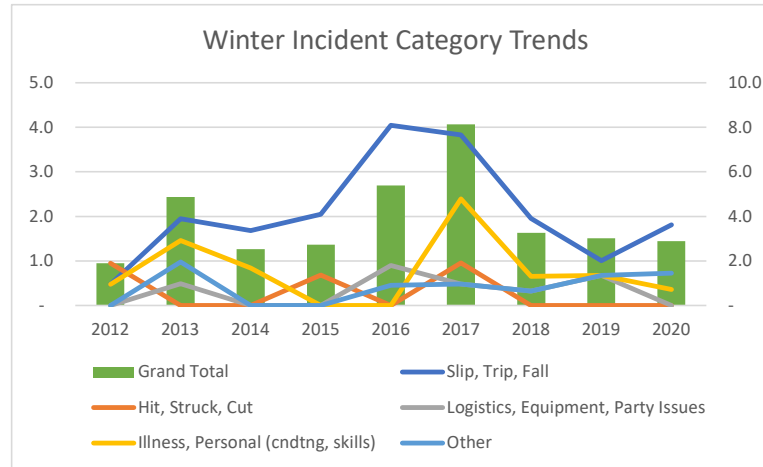
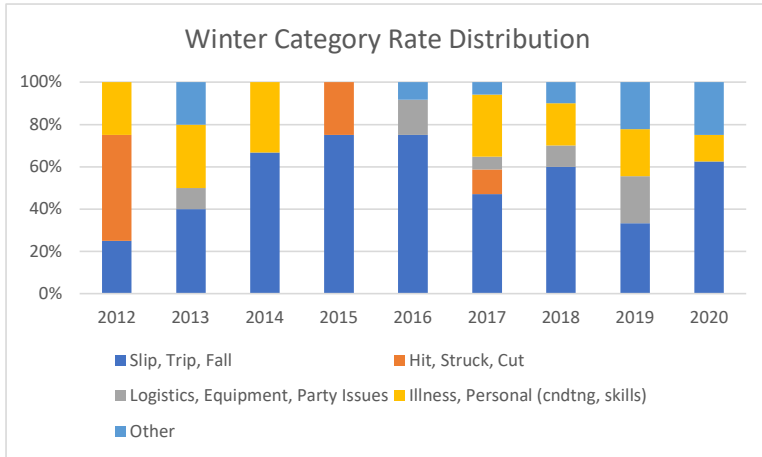


Trip Days (Back Country Ski, Nordic Ski, Snowshoe, Winter Scramble, Field Tr 2,106 2,055 1,188 1,467 2,226 2,088 3,065 2,984 2,766 21,251

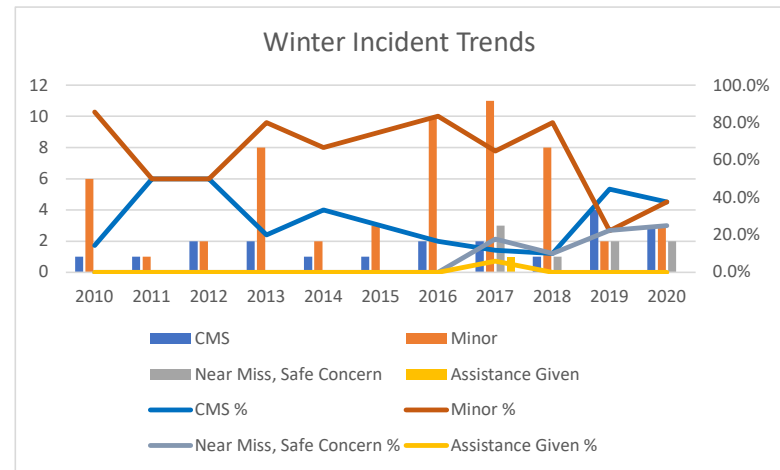
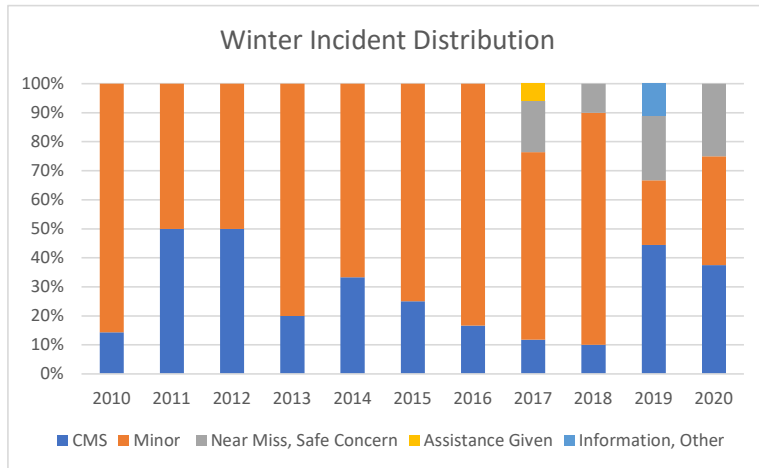
Winter by Category	2010	2011	2012	2013	2014	2015	2016	2017	2018	2019	2020	Grand Total
Slip, Trip, Fall	4	1	1	4	2	3	9	8	6	3	5	46
Hit, Struck, Cut	1	0	2	0	0	1	0	2	0	0	0	6
Logistics, Equipment, Party Issues	2	0	0	1	0	0	2	1	1	2	0	9
Illness, Personal Issues	0	0	1	3	1	0	0	5	2	2	1	15
Other	0	1	0	2	0	0	1	1	1	1	2	10
<b>Grand Total</b>	<b>7</b>	<b>2</b>	<b>4</b>	<b>10</b>	<b>3</b>	<b>4</b>	<b>12</b>	<b>17</b>	<b>10</b>	<b>9</b>	<b>8</b>	<b>86</b>
Slip, Trip, Fall %	57.1%	50.0%	25.0%	40.0%	66.7%	75.0%	75.0%	47.1%	60.0%	33.3%	62.5%	53.5%
Hit, Struck, Cut %	14.3%	0.0%	50.0%	0.0%	0.0%	25.0%	0.0%	11.8%	0.0%	0.0%	0.0%	7.0%
Logistics, Eqpmt, Party Issues %	28.6%	0.0%	0.0%	10.0%	0.0%	0.0%	16.7%	5.9%	10.0%	22.2%	0.0%	10.5%
Illness, Personal Issues %	0.0%	0.0%	25.0%	30.0%	33.3%	0.0%	0.0%	29.4%	20.0%	22.2%	12.5%	17.4%



Winter Category Rates	2012	2013	2014	2015	2016	2017	2018	2019	2020	Grand Total
Slip, Trip, Fall	0.5	1.9	1.7	2.0	4.0	3.8	2.0	1.0	1.8	2.2
Hit, Struck, Cut	0.9	-	-	0.7	-	1.0	-	-	-	0.3
Logistics, Equipment, Party Issues	-	0.5	-	-	0.9	0.5	0.3	0.7	-	0.4
Illness, Personal (cndtng, skills)	0.5	1.5	0.8	-	-	2.4	0.7	0.7	0.4	0.7
Other	-	1.0	-	-	0.4	0.5	0.3	0.7	0.7	0.5
Grand Total	1.9	4.9	2.5	2.7	5.4	8.1	3.3	3.0	2.9	4.0



Winter Incidents	2010	2011	2012	2013	2014	2015	2016	2017	2018	2019	2020	Grand Total	
CMS		1	1	2	2	1	1	2	2	1	4	3	20
Minor		6	1	2	8	2	3	10	11	8	2	3	56
Near Miss, Safe Concern		0	0	0	0	0	0	0	3	1	2	2	8
Assistance Given		0	0	0	0	0	0	0	1	0	0	0	1
Information, Other		0	0	0	0	0	0	0	0	0	1	0	1
Total		7	2	4	10	3	4	12	17	10	9	8	86
CMS %		14.3%	50.0%	50.0%	20.0%	33.3%	25.0%	16.7%	11.8%	10.0%	44.4%	37.5%	23.3%
Minor %		85.7%	50.0%	50.0%	80.0%	66.7%	75.0%	83.3%	64.7%	80.0%	22.2%	37.5%	65.1%
Near Miss, Safe Concern %		0.0%	0.0%	0.0%	0.0%	0.0%	0.0%	0.0%	17.6%	10.0%	22.2%	25.0%	9.3%
Assistance Given %		0.0%	0.0%	0.0%	0.0%	0.0%	0.0%	0.0%	5.9%	0.0%	0.0%	0.0%	1.2%
Information, Other %		0.0%	0.0%	0.0%	0.0%	0.0%	0.0%	0.0%	0.0%	0.0%	11.1%	0.0%	1.2%



Winter Incident Rates	2012	2013	2014	2015	2016	2017	2018	2019	2020	Grand Total
CMS	0.9	1.0	0.8	0.7	0.9	1.0	0.3	1.3	1.1	0.9
Minor	0.9	3.9	1.7	2.0	4.5	5.3	2.6	0.7	1.1	2.6
Near Miss, Safe Concern	-	-	-	-	-	1.4	0.3	0.7	0.7	0.4
Assistance Given	-	-	-	-	-	0.5	-	-	-	0.0
Information, Other	-	-	-	-	-	-	-	0.3	-	0.0
Total	1.9	4.9	2.5	2.7	5.4	8.1	3.3	3.0	2.9	4.0

