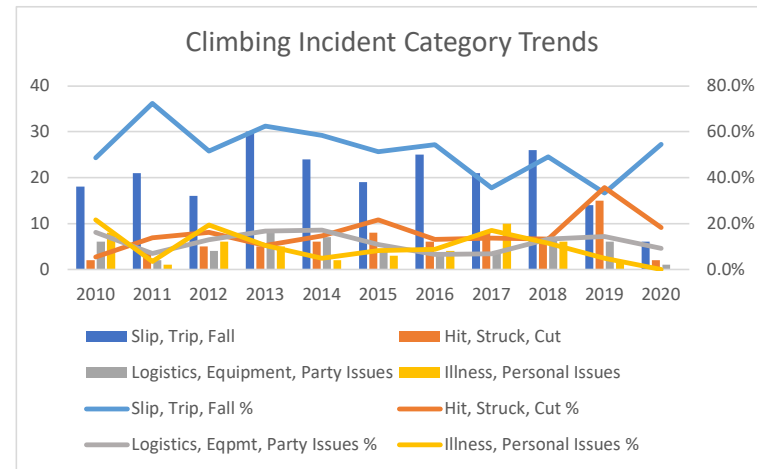
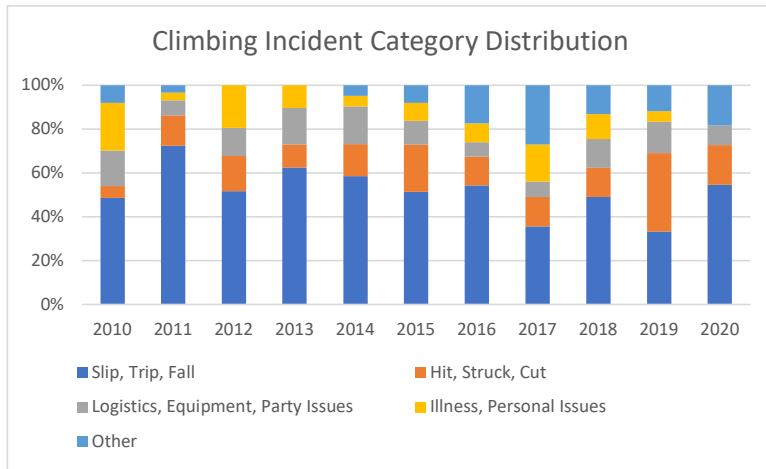
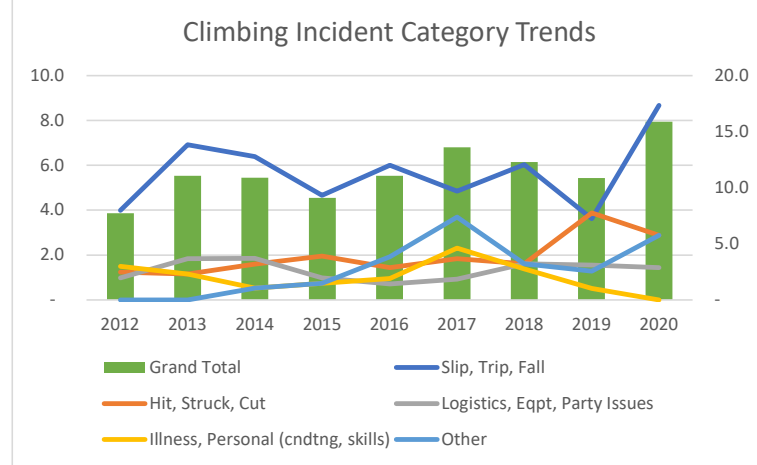
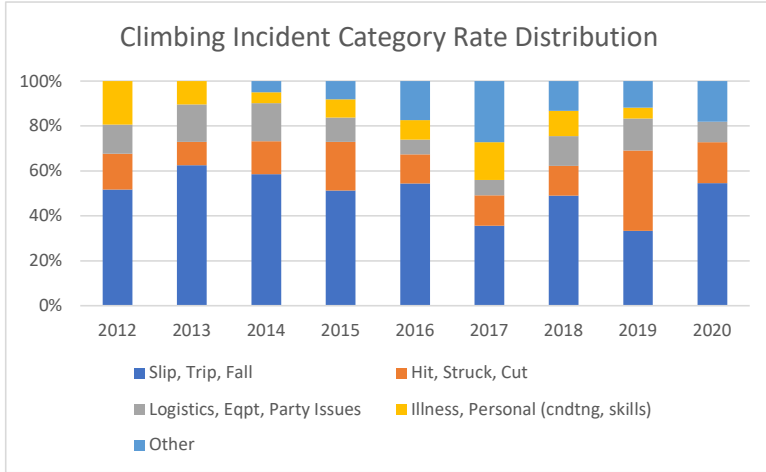


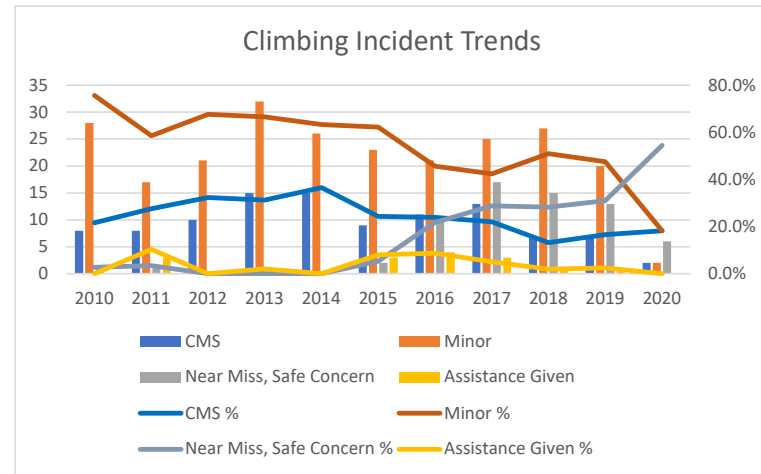
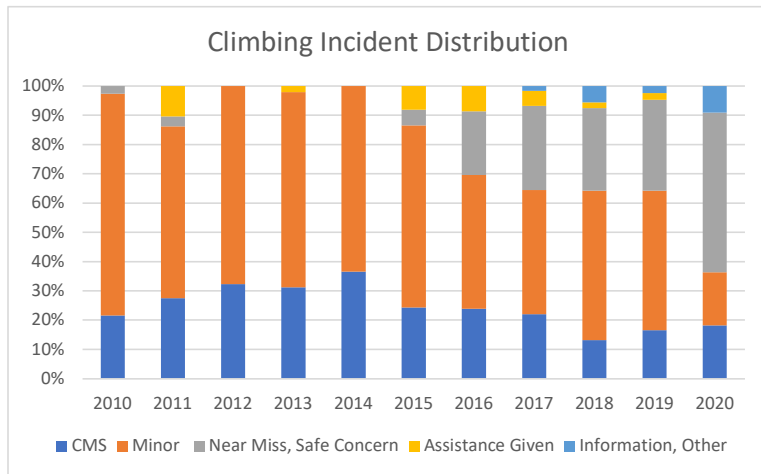
Climbing Trip Days			4,009	4,340	3,759	4,070	4,161	4,332	4,309	3,869	692	33,541
Climbing Incident Category	2010	2011	2012	2013	2014	2015	2016	2017	2018	2019	2020	Grand Total
Slip, Trip, Fall	18	21	16	30	24	19	25	21	26	14	6	220
Hit, Struck, Cut	2	4	5	5	6	8	6	8	7	15	2	68
Logistics, Equipment, Party Issues	6	2	4	8	7	4	3	4	7	6	1	52
Illness, Personal Issues	8	1	6	5	2	3	4	10	6	2	0	47
Other	3	1	0	0	2	3	8	16	7	5	2	47
Grand Total	37	29	31	48	41	37	46	59	53	42	11	434
Slip, Trip, Fall %	48.6%	72.4%	51.6%	62.5%	58.5%	51.4%	54.3%	35.6%	49.1%	33.3%	54.5%	50.7%
Hit, Struck, Cut %	5.4%	13.8%	16.1%	10.4%	14.6%	21.6%	13.0%	13.6%	13.2%	35.7%	18.2%	15.7%
Logistics, Eqpmt, Party Issues %	16.2%	6.9%	12.9%	16.7%	17.1%	10.8%	6.5%	6.8%	13.2%	14.3%	9.1%	12.0%
Illness, Personal Issues %	21.6%	3.4%	19.4%	10.4%	4.9%	8.1%	8.7%	16.9%	11.3%	4.8%	0.0%	10.8%



Climbing Category Rates	2012	2013	2014	2015	2016	2017	2018	2019	2020	Grand Total
Slip, Trip, Fall	4.0	6.9	6.4	4.7	6.0	4.8	6.0	3.6	8.7	6.6
Hit, Struck, Cut	1.2	1.2	1.6	2.0	1.4	1.8	1.6	3.9	2.9	2.0
Logistics, Eqpt, Party Issues	1.0	1.8	1.9	1.0	0.7	0.9	1.6	1.6	1.4	1.6
Illness, Personal (cndtng, skills)	1.5	1.2	0.5	0.7	1.0	2.3	1.4	0.5	-	1.4
Other	-	-	0.5	0.7	1.9	3.7	1.6	1.3	2.9	1.4
Grand Total	7.7	11.1	10.9	9.1	11.1	13.6	12.3	10.9	15.9	12.9



Climbing Incidents	2010	2011	2012	2013	2014	2015	2016	2017	2018	2019	2020	Grand Total
CMS	8	8	10	15	15	9	11	13	7	7	2	105
Minor	28	17	21	32	26	23	21	25	27	20	2	242
Near Miss, Safe Concern	1	1	0	0	0	2	10	17	15	13	6	65
Assistance Given	0	3	0	1	0	3	4	3	1	1	0	16
Information, Other	0	0	0	0	0	0	0	1	3	1	1	6
Total	37	29	31	48	41	37	46	59	53	42	11	434
CMS %	21.6%	27.6%	32.3%	31.3%	36.6%	24.3%	23.9%	22.0%	13.2%	16.7%	18.2%	24.2%
Minor %	75.7%	58.6%	67.7%	66.7%	63.4%	62.2%	45.7%	42.4%	50.9%	47.6%	18.2%	55.8%
Near Miss, Safe Concern %	2.7%	3.4%	0.0%	0.0%	0.0%	5.4%	21.7%	28.8%	28.3%	31.0%	54.5%	15.0%
Assistance Given %	0.0%	10.3%	0.0%	2.1%	0.0%	8.1%	8.7%	5.1%	1.9%	2.4%	0.0%	3.7%
Information, Other %	0.0%	0.0%	0.0%	0.0%	0.0%	0.0%	0.0%	1.7%	5.7%	2.4%	9.1%	1.4%
Total												



	2012	2013	2014	2015	2016	2017	2018	2019	2020	Grand Total
Climbing Incident Rate										
CMS	2.5	3.5	4.0	2.2	2.6	3.0	1.6	1.8	2.9	3.1
Minor	5.2	7.4	6.9	5.7	5.0	5.8	6.3	5.2	2.9	7.2
Near Miss, Safe Concern	-	-	-	0.5	2.4	3.9	3.5	3.4	8.7	1.9
Assistance Given	-	0.2	-	0.7	1.0	0.7	0.2	0.3	-	0.5
Information, Other	-	-	-	-	-	0.2	0.7	0.3	1.4	0.2
Total	7.7	11.1	10.9	9.1	11.1	13.6	12.3	10.9	15.9	12.9

